

Recombinant Human ESRRA Protein, Myc/DDK-tagged, C13 and N15-labeled

Cat. No. ESRRA-4797H Lot. No. (See product label)

SPECIFICATION

Product Overview

ESRRA MS Standard C13 and N15-labeled recombinant protein (NP_004442) with a C-terminal MYC/DDK tag, was expressed in HEK293 cells.

Species

Human

Source

HEK293

Description

The protein encoded by this gene is a nuclear receptor that is most closely related to the estrogen receptor. This protein acts as a site-specific transcription factor and interacts with members of the PGC-1 family of transcription cofactors to regulate the expression of most genes involved in cellular energy production as well as in the process of mitochondrial biogenesis. A processed pseudogene of ESRRA is located on chromosome 13q12.1.

Molecular Mass

45.5 kDa

AA Sequence

MSSQVVGIEPLYIKAEPASPDSPKGSSETETETPPVALAPGPAPTRCLPGHKEEEDGE
 GAGPGEQGGGKLVSSLPKRLCLVCGDVASGYHYGVASCEACKAFFKRTIQGSIEY
 SCPASNECEITKRRRKACQACRFTKCLRVGMLKEGVRLDRVRGGRQKYKRRPEVD
 PLPFPGPFPAGPLAVAGGPRKTAAPVNALVSHLLVVEPEKLYAMPDPAGPDGHLPA
 VATLCDLFDREIVVTISWAKSIPGFSSLSLSDQMSVLQSVWMEVLVLGVAQRSLPLQ
 DELAFAEDLVLDEEGARAAGLGELGAALLQLVRRRLQALRLEREEYVLLKALALANS
 SVHIEDAEAVEQLREALHEALLEYEAGRAGPGGGAERRRAGRLLLLTLPLLRQTAGKV

Tel: 1-631-559-9269 1-516-512-3133

Email: info@creative-biomart.com Fax: 1-631-938-8127

45-1 Ramsey Road, Shirley, NY 11967, USA

	LAHFYGVKLEGKVPMHKLFLEMLEAMMDTRTRPLEQKLISEEDLAANDILDYKDDDD KV
Purity	> 80% as determined by SDS-PAGE and Coomassie blue staining
Stability	Stable for 3 months from receipt of products under proper storage and handling conditions.
Storage	Store at -80 centigrade. Avoid repeated freeze-thaw cycles.
Concentration	50 µg/mL as determined by BCA
Storage Buffer	100 mM glycine, 25 mM Tris-HCl, pH 7.3.

GENE INFORMATION

Gene Name	ESRRA estrogen-related receptor alpha [Homo sapiens (human)]
Official Symbol	ESRRA
Synonyms	ESRRA; estrogen-related receptor alpha; ESRL1; steroid hormone receptor ERR1; ERR1; ERRa; ERRalpha; NR3B1; ERR-alpha; estrogen receptor-like 1; estrogen-related nuclear receptor alpha; nuclear receptor subfamily 3 group B member 1;
Gene ID	2101
mRNA Refseq	NM_004451
Protein Refseq	NP_004442
MIM	601998

 Tel: 1-631-559-9269 1-516-512-3133

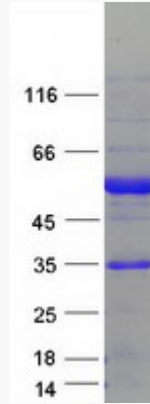
 Email: info@creative-biomart.com  Fax: 1-631-938-8127

 45-1 Ramsey Road, Shirley, NY 11967, USA

UniProt ID

P11474

SDS-PAGE



 Tel: 1-631-559-9269 1-516-512-3133

 Email: info@creative-biomart.com  Fax: 1-631-938-8127

 45-1 Ramsey Road, Shirley, NY 11967, USA