

## Recombinant Human ESRRG Protein, GST-tagged

Cat. No. ESRRG-3511H Lot. No. (See product label)

### SPECIFICATION

**Product Overview** Human ESRRG full-length ORF ( AAH64700, 1 a.a. - 442 a.a.) recombinant protein with GST-tag at N-terminal.

**Species** Human

**Source** Wheat Germ

#### Description

This gene encodes a member of the estrogen receptor-related receptor (ESRR) family, which belongs to the nuclear hormone receptor superfamily. All members of the ESRR family share an almost identical DNA binding domain, which is composed of two C4-type zinc finger motifs. The ESRR members are orphan nuclear receptors; they bind to the estrogen response element and steroidogenic factor 1 response element, and activate genes controlled by both response elements in the absence of any ligands. The ESRR family is closely related to the estrogen receptor (ER) family. They share target genes, co-regulators and promoters, and by targeting the same set of genes, the ESRRs seem to interfere with the ER-mediated estrogen response in various ways. It has been reported that the family member encoded by this gene functions as a transcriptional activator of DNA cytosine-5-methyltransferases 1 (Dnmt1) expression by direct binding to its response elements in the DNMT1 promoters, modulates cell proliferation and estrogen signaling in breast cancer, and negatively regulates bone morphogenetic protein 2-induced osteoblast differentiation and bone formation. Multiple alternatively spliced transcript variants have been identified, which mainly differ at the 5' end and some of which encode protein isoforms differing in the N-terminal region. [provided by RefSeq, Aug 2011]

 Tel: 1-631-559-9269 1-516-512-3133

 Email: [info@creative-biomart.com](mailto:info@creative-biomart.com)  Fax: 1-631-938-8127

 45-1 Ramsey Road, Shirley, NY 11967, USA

<b>Molecular Mass</b>	74.36 kDa
<b>AA Sequence</b>	<p>MSNKDRHIDSSCSSFIKTEPSSPASLTDSVNHHSPPGGSSDASGSYSSTMNGHQNGL  DSPPLYPSAPILGGSGPVRKLYDDCSSTIVEDPQTKCEYMLNSMPKRLCLVCGDIAS  GYHYGVASCEACKAFFKRTIQGNIEYSCPATNECEITKRRRKSCQACRFMKCLKVG  MLKEGVRLDRVRGGRQKYKRRIDAENSPYLNPLVQPAKKPLLWSDPADNKIVSHL  LVAEPEKIYAMPDPTAPDSDIKALTTLCDLADRELVVIIGWAKHIPGFSTLSLADQMSL  LQSAWMEILILGVVYRSLSFEDLVYADDYIMDEDQSKLAGLLDLNAILQLVKKYKS  MKLEKEEFVTLKAIALANSDSMHIEDVEAVQKLQDVLHEALQDYEAGQHMEDPRRA  GKMLMTLPLLRQTSTKAVQHFYNIKLEGKVPMHKLLLEMLEAKV</p>
<b>Applications</b>	<p>Enzyme-linked Immunoabsorbent Assay  Western Blot (Recombinant protein)  Antibody Production  Protein Array</p>
<b>Notes</b>	Best use within three months from the date of receipt of this protein.
<b>Storage</b>	Store at -80 centigrade. Aliquot to avoid repeated freezing and thawing.
<b>Storage Buffer</b>	50 mM Tris-HCl, 10 mM reduced Glutathione, pH=8.0 in the elution buffer.

## GENE INFORMATION

<b>Gene Name</b>	ESRRG estrogen-related receptor gamma [ Homo sapiens ]
<b>Official Symbol</b>	ESRRG
<b>Synonyms</b>	ESRRG; estrogen-related receptor gamma; ERR gamma-2; estrogen receptor-related protein 3; nuclear receptor subfamily 3 group B member 3; ERR3; NR3B3; ERRgamma; FLJ16023; KIAA0832; DKFZp781L1617;

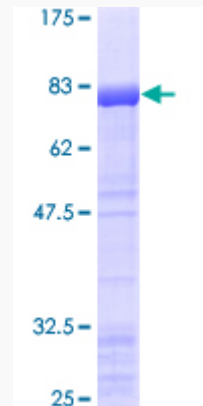
 Tel: 1-631-559-9269 1-516-512-3133

 Email: [info@creative-biomart.com](mailto:info@creative-biomart.com)  Fax: 1-631-938-8127

 45-1 Ramsey Road, Shirley, NY 11967, USA

Gene ID	2104
mRNA Refseq	NM_001134285
Protein Refseq	NP_001127757
MIM	602969
UniProt ID	P62508

**Quality Control  
Testing**



12.5% SDS-PAGE Stained with Coomassie Blue.

 Tel: 1-631-559-9269 1-516-512-3133

 Email: [info@creative-biomart.com](mailto:info@creative-biomart.com)  Fax: 1-631-938-8127

 45-1 Ramsey Road, Shirley, NY 11967, USA