

Recombinant Human ESRRG Protein, Myc/DDK-tagged, C13 and N15-labeled

Cat. No. ESRRG-4420H **Lot. No.** (See product label)

SPECIFICATION

Product Overview

ESRRG MS Standard C13 and N15-labeled recombinant protein (NP_996318) with a C-terminal MYC/DDK tag, was expressed in HEK293 cells.

Species

Human

Source

HEK293

Description

This gene encodes a member of the estrogen receptor-related receptor (ESRR) family, which belongs to the nuclear hormone receptor superfamily. All members of the ESRR family share an almost identical DNA binding domain, which is composed of two C4-type zinc finger motifs. The ESRR members are orphan nuclear receptors; they bind to the estrogen response element and steroidogenic factor 1 response element, and activate genes controlled by both response elements in the absence of any ligands. The ESRR family is closely related to the estrogen receptor (ER) family. They share target genes, co-regulators and promoters, and by targeting the same set of genes, the ESRRs seem to interfere with the ER-mediated estrogen response in various ways. It has been reported that the family member encoded by this gene functions as a transcriptional activator of DNA cytosine-5-methyltransferases 1 (Dnmt1) expression by direct binding to its response elements in the DNMT1 promoters, modulates cell proliferation and estrogen signaling in breast cancer, and negatively regulates bone morphogenetic protein 2-induced osteoblast differentiation and bone formation. Multiple alternatively spliced transcript variants have been identified, which mainly differ at the 5' end and some of which encode protein

 Tel: 1-631-559-9269 1-516-512-3133

 Email: info@creative-biomart.com  Fax: 1-631-938-8127

 45-1 Ramsey Road, Shirley, NY 11967, USA

isoforms differing in the N-terminal region.

Molecular Mass 48.6 kDa

AA Sequence

MSNKDRHIDSSCSSFIKTEPSSPASLTDSVNHHSPPGGSSDASGSYSSTMNGHQGL
 DSPPLYPSAPILGGSGPVRKLYDDCSSTIVEDPQTKCEYMLNSMPKRLCLVCGDIAS
 GYHYGVASCEACKAFFKRTIQGNIEYSCPATNECEITKRRRKSCQACRFMKCLKVG
 MLKEGVRLDRVRGGRQKYKRRIDAENSPYLNQPLVQPAKKPYNKIVSHLLVAEPEKI
 YAMPDPTVPDSDIKALTTLCDLADRELVVIIGWAKHIPGFSTLSLADQMSLLQSAWME
 ILILGVVYRSLSFEDLVYADDYIMDEDQSKLAGLLDLNAILQLVKKYKSMKLEKEEF
 VTLKAIALANSDSMHIEDVEAVQKLQDVLHEALQDYEAGQHMEDPRRAGKMLMTLP
 LLRQTSTKAVQHFYNIKLEGKVPMHKLFLEMLEAKVTRTRPLEQKLISEEDLAANDIL
 DYKDDDDKV

Purity > 80% as determined by SDS-PAGE and Coomassie blue staining

Stability Stable for 3 months from receipt of products under proper storage and handling conditions.

Storage Store at -80 centigrade. Avoid repeated freeze-thaw cycles.

Concentration 50 µg/mL as determined by BCA

Storage Buffer 100 mM glycine, 25 mM Tris-HCl, pH 7.3.

GENE INFORMATION

Gene Name [ESRRG estrogen-related receptor gamma \[Homo sapiens \(human\) \]](#)

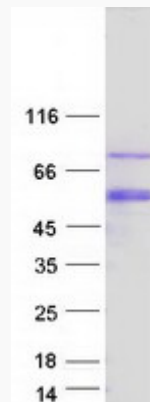
Official Symbol [ESRRG](#)

 Tel: 1-631-559-9269 1-516-512-3133

 Email: info@creative-biomart.com  Fax: 1-631-938-8127

 45-1 Ramsey Road, Shirley, NY 11967, USA

Synonyms	ESRRG; estrogen-related receptor gamma; ERR gamma-2; estrogen receptor-related protein 3; nuclear receptor subfamily 3 group B member 3; ERR3; NR3B3; ERRgamma; FLJ16023; KIAA0832; DKFZp781L1617;
Gene ID	2104
mRNA Refseq	NM_206595
Protein Refseq	NP_996318
MIM	602969
UniProt ID	P62508

SDS-PAGE

 Tel: 1-631-559-9269 1-516-512-3133

 Email: info@creative-biomart.com  Fax: 1-631-938-8127

 45-1 Ramsey Road, Shirley, NY 11967, USA