

Recombinant Mycobacterium Tuberculosis ESXA Protein (6-95 aa), His-tagged

Cat. No. ESXA-1613M **Lot. No.** (See product label)

SPECIFICATION

Product Overview	Recombinant Mycobacterium Tuberculosis (strain ATCC 25618/H37Rv) ESXA Protein (6-95 aa) is produced by Yeast expression system. This protein is fused with a 6xHis tag at the N-terminal. Protein Description: Partial.
Species	Mycobacterium Tuberculosis
Source	Yeast
ProteinLength	6-95 aa
Description	Not known. Elicits high level of IFN-gamma from mory effector cells during the first phase of a protective immune response.
Form	Tris-based buffer,50% glycerol
Molecular Mass	11.3 kDa
AA Sequence	WNFAGIEAAASAIQGNVTSIHSLLEDEGKQSLTKLAAAWGGSGSEAYQGQVQQKWDAT ATELNALQNLARTISEAGQAMASTEAGNVTGMFA
Purity	> 90% as determined by SDS-PAGE.
Notes	Repeated freezing and thawing is not recommended. Store working aliquots at 4 centigrade for up to one week.

 Tel: 1-631-559-9269 1-516-512-3133

 Email: info@creative-biomart.com  Fax: 1-631-938-8127

 45-1 Ramsey Road, Shirley, NY 11967, USA

Storage

The shelf life is related to many factors, storage state, buffer ingredients, storage temperature and the stability of the protein itself. Generally, the shelf life of liquid form is 6 months at -20 centigrade/-80 centigrade. The shelf life of lyophilized form is 12 months at -20 centigrade/-80 centigrade.

Concentration

A hardcopy of COA with reconstitution instruction is sent along with the products.

GENE INFORMATION

Gene Name [esxA ESAT-6 protein EsxA \[Mycobacterium tuberculosis H37Rv \]](#)

Official Symbol [ESXA](#)

Synonyms [esat-6;](#)

Gene ID [886209](#)

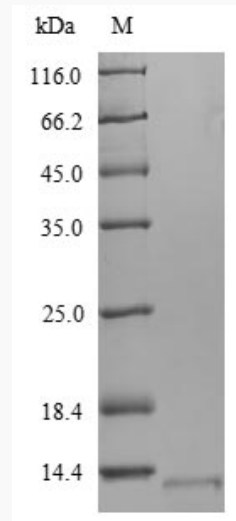
Protein Refseq [YP_178023](#)

UniProt ID [P9WVK7](#)

 Tel: 1-631-559-9269 1-516-512-3133

 Email: info@creative-biomart.com  Fax: 1-631-938-8127

 45-1 Ramsey Road, Shirley, NY 11967, USA



(Tris-Glycine gel) Discontinuous SDS-PAGE (reduced) with 5% enrichment gel and 15% separation gel.

 Tel: 1-631-559-9269 1-516-512-3133

 Email: info@creative-biomart.com  Fax: 1-631-938-8127

 45-1 Ramsey Road, Shirley, NY 11967, USA