

Recombinant Human ETF1 Protein, GST-tagged

Cat. No. ETF1-3514H Lot. No. (See product label)

SPECIFICATION

Product Overview	Human ETF1 full-length ORF (NP_004721.1, 1 a.a. - 437 a.a.) recombinant protein with GST-tag at N-terminal.
Species	Human
Source	Wheat Germ
Description	This gene encodes a class-1 polypeptide chain release factor. The encoded protein plays an essential role in directing termination of mRNA translation from the termination codons UAA, UAG and UGA. This protein is a component of the SURF complex which promotes degradation of prematurely terminated mRNAs via the mechanism of nonsense-mediated mRNA decay (NMD). Alternate splicing results in multiple transcript variants. Pseudogenes of this gene are found on chromosomes 6, 7, and X. [provided by RefSeq, Aug 2013]
Molecular Mass	75.4 kDa
AA Sequence	MADDPSAADRNVEIWKIKKLIKSLAARGNGTSMISLIIPPKDQISRVAKMLADEFGTA SNIKSRVNRLSVLGAITSVQQRLKLYNKVPPNGLVVYCGTIVTEEGKEKKVNIDFEPF KPINTSLYLCDNKFHTEALTALLSDDSKFGFVIDGSGALFGTLQGNTREVLHKFTVDL PKKHGRGGQSALRFARLRMEKRHNYVRKVAETA VQLFISGDKVNVAGLVLGASADF KTELSQSDMFDQRLQSKVLKLVDISYGGENGFNQAIELSTEVLSNVKFIQEKKLIGRY FDEISQDTGKYCFGVEDTLKALEMGAVEILIVYENLDIMRYVLHCQGTEEEKILYLTP QEKD KSHFTDKETGQEH LIESMPLLEWFANNYKKFGATLEIVTDKSQEGSQFVKGF

 Tel: 1-631-559-9269 1-516-512-3133

 Email: info@creative-biomart.com  Fax: 1-631-938-8127

 45-1 Ramsey Road, Shirley, NY 11967, USA

GGIGGILRYRVDFQGM EYQGGDDEFFDLDDY

Applications

Enzyme-linked Immunoabsorbent Assay
 Western Blot (Recombinant protein)
 Antibody Production
 Protein Array

Notes

Best use within three months from the date of receipt of this protein.

Storage

Store at -80 centigrade. Aliquot to avoid repeated freezing and thawing.

Storage Buffer

50 mM Tris-HCl, 10 mM reduced Glutathione, pH=8.0 in the elution buffer.

GENE INFORMATION

Gene Name

[ETF1 eukaryotic translation termination factor 1 \[Homo sapiens \]](#)

Official Symbol

[ETF1](#)

Synonyms

ETF1; eukaryotic translation termination factor 1; ERF, ERF1, SUP45L1; eukaryotic peptide chain release factor subunit 1; eRF1; polypeptide chain release factor 1; RF1; sup45 (yeast omnipotent suppressor 45) homolog like 1; TB3 1; protein Cl1; eukaryotic release factor 1; sup45 (yeast omnipotent suppressor 45) homolog-like 1; ERF; ERF1; TB3-1; D5S1995; SUP45L1; MGC111066;

Gene ID

[2107](#)

mRNA Refseq

[NM_004730](#)

Protein Refseq

[NP_004721](#)

 Tel: 1-631-559-9269 1-516-512-3133

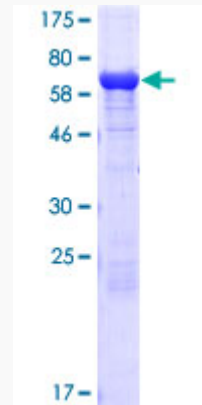
 Email: info@creative-biomart.com  Fax: 1-631-938-8127

 45-1 Ramsey Road, Shirley, NY 11967, USA

MIM 600285

UniProt ID P62495

**Quality Control
Testing**



12.5% SDS-PAGE Stained with Coomassie Blue.

 Tel: 1-631-559-9269 1-516-512-3133

 Email: info@creative-biomart.com  Fax: 1-631-938-8127

 45-1 Ramsey Road, Shirley, NY 11967, USA