

Recombinant Human ETF1 Protein, Myc/DDK-tagged, C13 and N15-labeled

Cat. No. ETF1-3650H **Lot. No.** (See product label)

SPECIFICATION

Product Overview	ETF1 MS Standard C13 and N15-labeled recombinant protein (NP_004721) with a C-terminal MYC/DDK tag, was expressed in HEK293 cells.
Species	Human
Source	HEK293
Description	This gene encodes a class-1 polypeptide chain release factor. The encoded protein plays an essential role in directing termination of mRNA translation from the termination codons UAA, UAG and UGA. This protein is a component of the SURF complex which promotes degradation of prematurely terminated mRNAs via the mechanism of nonsense-mediated mRNA decay (NMD). Alternate splicing results in multiple transcript variants. Pseudogenes of this gene are found on chromosomes 6, 7, and X.
Molecular Mass	48.9 kDa
AA Sequence	MADDPSAADRNVEIWKIKKLIKSLAARGNGTSMISLIIPPKDQISRVAKMLADEFGTA SNIKSRVNRLSVLGAITSVQQRLKLYNKVPPNGLVVYCGTIVTEEGKEKKVNIDFEPF KPINTSLYLCDNKFHTEALTALLSDDSKFGFVIDGSGALFGTLQGNTREVLHKFTVDL PKKHGRGGQSALRFARLRMEKRHNYVRKVAETA VQLFISGDKVNVAGLVLAGSADF KTELSQSDMFDQRLQSKVLKLVDISYGGENGFNQAIELSTEVLSNVKFIQEKKLIGRY FDEISQDTGKYCFGVEDTLKALEMGAVEILIVYENLDIMRYVLHCQGTEEEKILYLTP

 Tel: 1-631-559-9269 1-516-512-3133

 Email: info@creative-biomart.com  Fax: 1-631-938-8127

 45-1 Ramsey Road, Shirley, NY 11967, USA



QEKD KSHFTDKETGQEHELIESMPLLEWFANNYKKFGATLEIVTDKSQEGSQFVKGF
GGIGGILRYRVDFQGM EYQGGDDEFFDLDDYTRTRPLEQKLISEEDLAANDILDYKD
DDDKV

Purity > 80% as determined by SDS-PAGE and Coomassie blue staining

Stability Stable for 3 months from receipt of products under proper storage and handling conditions.

Storage Store at -80 centigrade. Avoid repeated freeze-thaw cycles.

Concentration 50 µg/mL as determined by BCA

Storage Buffer 100 mM glycine, 25 mM Tris-HCl, pH 7.3.

GENE INFORMATION

Gene Name ETF1 eukaryotic translation termination factor 1 [Homo sapiens (human)]

Official Symbol ETF1

Synonyms ETF1; eukaryotic translation termination factor 1; ERF, ERF1, SUP45L1; eukaryotic peptide chain release factor subunit 1; eRF1; polypeptide chain release factor 1; RF1; sup45 (yeast omnipotent suppressor 45) homolog like 1; TB3 1; protein Cl1; eukaryotic release factor 1; sup45 (yeast omnipotent suppressor 45) homolog-like 1; ERF; ERF1; TB3-1; D5S1995; SUP45L1; MGC111066;

Gene ID 2107

mRNA Refseq NM_004730

Tel: 1-631-559-9269 1-516-512-3133

Email: info@creative-biomart.com Fax: 1-631-938-8127

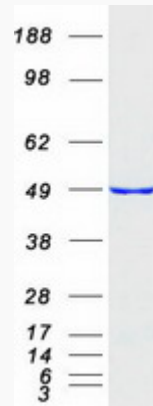
45-1 Ramsey Road, Shirley, NY 11967, USA

Protein Refseq NP_004721

MIM 600285

UniProt ID P62495

SDS-PAGE



 Tel: 1-631-559-9269 1-516-512-3133

 Email: info@creative-biomart.com  Fax: 1-631-938-8127

 45-1 Ramsey Road, Shirley, NY 11967, USA