

Recombinant Human ETFB Protein (Ala2-Ile255), N-His tagged

Cat. No. ETFB-2634H Lot. No. (See product label)

SPECIFICATION

Product Overview	Recombinant human ETFB (Ala2-Ile255) protein fused with the N-His tag was expressed in E. coli.
Species	Human
Source	E.coli
ProteinLength	Ala2-Ile255
Molecular Mass	30.02 kDa
Purity	>90 % as determined by SDS-PAGE.
Notes	For research use only.
Storage	Use a manual defrost freezer and avoid repeated freeze thaw cycles. Store at 2 to 8 centigrade for one week. Store at -20 to -80 centigrade for twelve months from the date of receipt.
Storage Buffer	0.01M PBS, pH 7.4, 0.02 % NLS
Reconstitution	Reconstitute in sterile water for a stock solution.
Shipping	In general, proteins are provided as lyophilized powder/frozen liquid. They are shipped out with dry ice/blue ice unless customers require otherwise.

 Tel: 1-631-559-9269 1-516-512-3133

 Email: info@creative-biomart.com  Fax: 1-631-938-8127

 45-1 Ramsey Road, Shirley, NY 11967, USA

GENE INFORMATION

Gene Name **ETFB** electron-transfer-flavoprotein, beta polypeptide [Homo sapiens (human)]

Official Symbol **ETFB**

Synonyms ETFB; electron-transfer-flavoprotein, beta polypeptide; electron transfer flavoprotein subunit beta; beta-ETF; electron transfer flavoprotein beta subunit; electron transfer flavoprotein beta-subunit; electron transfer flavoprotein, beta polypeptide; electron-transferring-flavoprotein, beta polypeptide; MADD; FP585;

Gene ID **2109**

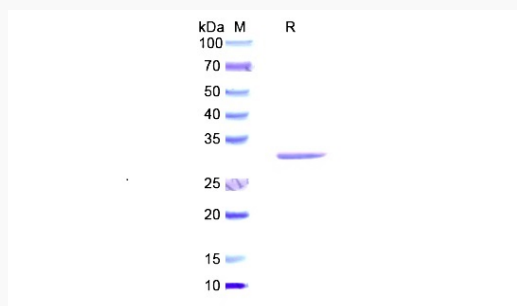
mRNA Refseq **NM_001014763**

Protein Refseq **NP_001014763**

MIM **130410**

UniProt ID **P38117**

SDS-PAGE



 Tel: 1-631-559-9269 1-516-512-3133

 Email: info@creative-biomart.com  Fax: 1-631-938-8127

 45-1 Ramsey Road, Shirley, NY 11967, USA