

## Recombinant Human ETFB Protein, GST-tagged

Cat. No. ETFB-3518H Lot. No. (See product label)

### SPECIFICATION

<b>Product Overview</b>	Human ETFB full-length ORF ( NP_001976.1, 1 a.a. - 255 a.a.) recombinant protein with GST-tag at N-terminal.
<b>Species</b>	Human
<b>Source</b>	Wheat Germ
<b>Description</b>	This gene encodes electron-transfer-flavoprotein, beta polypeptide, which shuttles electrons between primary flavoprotein dehydrogenases involved in mitochondrial fatty acid and amino acid catabolism and the membrane-bound electron transfer flavoprotein ubiquinone oxidoreductase. The gene deficiencies have been implicated in type II glutaricaciduria. Alternatively spliced transcript variants have been found for this gene. [ provided by RefSeq, Jul 2008]
<b>Molecular Mass</b>	54.2 kDa
<b>AA Sequence</b>	MAELRVLVAVKRVIDYAVKIRVKPDRTGVVTDGVKHSMPFCEIAVEEAVRLKEKKLVKEVIAVSCGPAQCQETIRTALAMGADRGIHVEVPPAEAERLGPLQVARVLAKLAEEKVDLVLLGKQAIDDDCNQTGQMTAGFLDWPQGTAFASQVTLEGDKLKVEREIDGGL ETLRLKLPVVTTADLRLNEPRYATLPNIMKAKKKKIEVIKPGDLGVDLTSKLSVISVED PPQRTAGVKVETTEDLVAKLKEIGRI
<b>Applications</b>	Enzyme-linked Immunoabsorbent Assay Western Blot (Recombinant protein) Antibody Production

 Tel: 1-631-559-9269 1-516-512-3133

 Email: [info@creative-biomart.com](mailto:info@creative-biomart.com)  Fax: 1-631-938-8127

 45-1 Ramsey Road, Shirley, NY 11967, USA

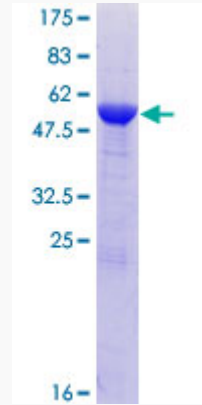
	Protein Array
<b>Notes</b>	Best use within three months from the date of receipt of this protein.
<b>Storage</b>	Store at -80 centigrade. Aliquot to avoid repeated freezing and thawing.
<b>Storage Buffer</b>	50 mM Tris-HCl, 10 mM reduced Glutathione, pH=8.0 in the elution buffer.
<b>GENE INFORMATION</b>	
<b>Gene Name</b>	ETFB electron-transfer-flavoprotein, beta polypeptide [ Homo sapiens ]
<b>Official Symbol</b>	ETFB
<b>Synonyms</b>	ETFB; electron-transfer-flavoprotein, beta polypeptide; electron transfer flavoprotein subunit beta; beta-ETF; electron transfer flavoprotein beta subunit; electron transfer flavoprotein beta-subunit; electron transfer flavoprotein, beta polypeptide; electron-transferring-flavoprotein, beta polypeptide; MADD; FP585;
<b>Gene ID</b>	2109
<b>mRNA Refseq</b>	NM_001014763
<b>Protein Refseq</b>	NP_001014763
<b>MIM</b>	130410
<b>UniProt ID</b>	P38117

 Tel: 1-631-559-9269 1-516-512-3133

 Email: [info@creative-biomart.com](mailto:info@creative-biomart.com)  Fax: 1-631-938-8127

 45-1 Ramsey Road, Shirley, NY 11967, USA

**Quality Control  
Testing**



12.5% SDS-PAGE Stained with Coomassie Blue.

 Tel: 1-631-559-9269 1-516-512-3133

 Email: [info@creative-biomart.com](mailto:info@creative-biomart.com)  Fax: 1-631-938-8127

 45-1 Ramsey Road, Shirley, NY 11967, USA