

Recombinant Human ETFB protein, His-tagged

Cat. No. ETFB-4114H Lot. No. (See product label)

SPECIFICATION

Product Overview	Recombinant Human ETFB protein(P38117)(270aa), fused with N-terminal His tag, was expressed in E. coli.
Species	Human
Source	E.coli
Protein Length	270aa(including fusion tag)
Tag	N-His
Form	20mM Tris.Cl, 100mM NaCl, 0.4M Urea, 50% Glycerol, pH8.0.
Molecular Mass	29.8kDa(including fusion tag)
Storage	Store at -80°C and avoid repeated freeze-thaw cycles.
Reconstitution	It is recommended that sterile water be added to the vial to prepare a stock solution of 0.2 ug/ul. Centrifuge the vial at 4°C before opening to recover the entire contents.

GENE INFORMATION

Gene Name	ETFBE electron-transfer-flavoprotein, beta polypeptide [Homo sapiens]
Official Symbol	ETFBE

 Tel: 1-631-559-9269 1-516-512-3133

 Email: info@creative-biomart.com  Fax: 1-631-938-8127

 45-1 Ramsey Road, Shirley, NY 11967, USA

Synonyms ETFB; electron-transfer-flavoprotein, beta polypeptide; electron transfer flavoprotein subunit beta; beta-ETF; electron transfer flavoprotein beta subunit; electron transfer flavoprotein beta-subunit; electron transfer flavoprotein, beta polypeptide; electron-transferring-flavoprotein, beta polypeptide; MADD; FP585;

Gene ID 2109

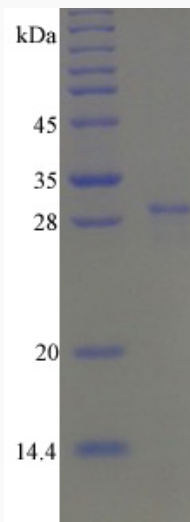
mRNA Refseq NM_001014763

Protein Refseq NP_001014763

MIM 130410

UniProt ID P38117

SDS-PAGE



 Tel: 1-631-559-9269 1-516-512-3133

 Email: info@creative-biomart.com  Fax: 1-631-938-8127

 45-1 Ramsey Road, Shirley, NY 11967, USA