

# Recombinant Human ETS1

Cat. No. ETS1-118H Lot. No. (See product label)

## SPECIFICATION

<b>Product Overview</b>	Recombinant Human erythroblastosis 1 protein expressed in <i>E.Coli</i> encodes amino acids 220-442 and has a molecular mass of 48 kDa.
<b>Species</b>	Human
<b>Source</b>	E.coli
<b>Protein Length</b>	220-442 a.a.
<b>Description</b>	Protein C-ets-1 is a protein that in humans is encoded by the ETS1 gene. The protein encoded by this gene belongs to the ETS family of transcription factors.
<b>Formulation</b>	5g/50µl Recombinant Human Ets-1 protein at 100g/ml in 50mM Tris-Acetate, pH7.5, 1mM EDTA and 20% Glycerol.
<b>Application</b>	•ELISA •Inhibition Assays •Western Blotting.
<b>Characterization</b>	On SDS-PAGE comassie blue stained gel, the purified recombinant protein shows a band at 48 kDa (Including GST).
<b>Storage &amp; Stability</b>	Store vial at -20°C to -80°C. When stored at the recommended temperature, this protein is stable for 12 months.

## GENE INFORMATION

 Tel: 1-631-559-9269 1-516-512-3133

 Email: [info@creative-biomart.com](mailto:info@creative-biomart.com)  Fax: 1-631-938-8127

 45-1 Ramsey Road, Shirley, NY 11967, USA

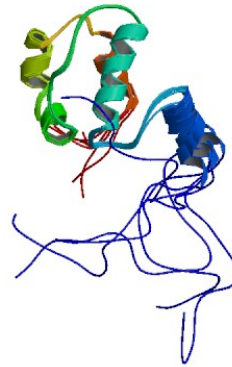
<b>Gene Name</b>	ETS1 v-ets erythroblastosis virus E26 oncogene homolog 1 (avian) [ Homo sapiens ]
<b>Synonyms</b>	ETS1; -ets erythroblastosis virus E26 oncogene homolog 1 (avian); ETS-1; EWSR2; FLJ10768; p54; v-ets erythroblastosis virus E26 oncogene homolog 1; ets protein; v-ets avian erythroblastosis virus E2 oncogene homolog 1; v-ets avian erythroblastosis virus E26 oncogene homolog 1; Avian erythroblastosis virus E26 (v-ets) oncogene homolog-1
<b>Gene ID</b>	2113
<b>mRNA Refseq</b>	NM_001143820
<b>Protein Refseq</b>	NP_001137292
<b>UniProt ID</b>	P14921
<b>Chromosome Location</b>	11q23.3
<b>MIM</b>	164720
<b>Pathway</b>	Dorso-ventral axis formation; Pathways in cancer; Renal cell carcinoma
<b>Function</b>	sequence-specific DNA binding; transcription factor activity; transcription factor binding

 Tel: 1-631-559-9269 1-516-512-3133

 Email: [info@creative-biomart.com](mailto:info@creative-biomart.com)  Fax: 1-631-938-8127

 45-1 Ramsey Road, Shirley, NY 11967, USA

PDB rendering based  
on 1bqv.



 Tel: 1-631-559-9269 1-516-512-3133

 Email: [info@creative-biomart.com](mailto:info@creative-biomart.com)  Fax: 1-631-938-8127

 45-1 Ramsey Road, Shirley, NY 11967, USA