

Recombinant Human ETS1 Protein (Met1-Thr272), N-His tagged

Cat. No. ETS1-2782H **Lot. No.** (See product label)

SPECIFICATION

Product Overview	Recombinant human ETS1 (Met1-Thr272) protein fused with the N-terminus His tag was expressed in E. coli.
Species	Human
Source	E.coli
ProteinLength	Met1-Thr272
Molecular Mass	29.92 kDa
Purity	>90 % as determined by SDS-PAGE.
Notes	For research use only.
Storage	Use a manual defrost freezer and avoid repeated freeze thaw cycles. Store at 2 to 8 centigrade for one week. Store at -20 to -80 centigrade for twelve months from the date of receipt.
Storage Buffer	Supplied as solution form in PBS or lyophilized from PBS.
Reconstitution	Reconstitute in sterile water for a stock solution.
Shipping	In general, proteins are provided as lyophilized powder/frozen liquid. They are

 Tel: 1-631-559-9269 1-516-512-3133

 Email: info@creative-biomart.com  Fax: 1-631-938-8127

 45-1 Ramsey Road, Shirley, NY 11967, USA

shipped out with dry ice/blue ice unless customers require otherwise.

GENE INFORMATION

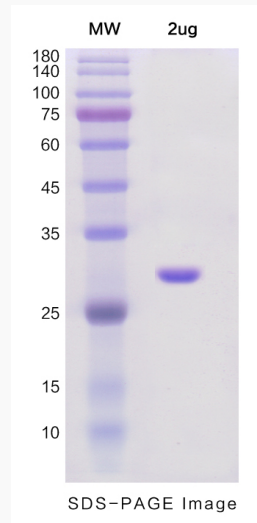
Gene Name	ETS1 v-ets erythroblastosis virus E26 oncogene homolog 1 (avian) [Homo sapiens (human)]
Official Symbol	ETS1
Synonyms	ETS1; v-ets erythroblastosis virus E26 oncogene homolog 1 (avian); EWSR2, v ets avian erythroblastosis virus E26 oncogene homolog 1; protein C-ets-1; Avian erythroblastosis virus E26 (v ets) oncogene homolog 1; ets protein; ETS 1; FLJ10768; p54; v-ets avian erythroblastosis virus E2 oncogene homolog 1; Avian erythroblastosis virus E26 (v-ets) oncogene homolog-1; ETS-1; EWSR2;
Gene ID	2113
mRNA Refseq	NM_001143820
Protein Refseq	NP_001137292
MIM	164720
UniProt ID	P14921

 Tel: 1-631-559-9269 1-516-512-3133

 Email: info@creative-biomart.com  Fax: 1-631-938-8127

 45-1 Ramsey Road, Shirley, NY 11967, USA

SDS-PAGE



 Tel: 1-631-559-9269 1-516-512-3133

 Email: info@creative-biomart.com  Fax: 1-631-938-8127

 45-1 Ramsey Road, Shirley, NY 11967, USA