

## Recombinant Human ETS1 Protein, GST-tagged

Cat. No. ETS1-3527H Lot. No. (See product label)

### SPECIFICATION

**Product Overview** Human ETS1 full-length ORF ( NP\_005229.1, 1 a.a. - 441 a.a.) recombinant protein with GST-tag at N-terminal.

**Species** Human

**Source** Wheat Germ

**Description** This gene encodes a member of the ETS family of transcription factors, which are defined by the presence of a conserved ETS DNA-binding domain that recognizes the core consensus DNA sequence GGAA/T in target genes. These proteins function either as transcriptional activators or repressors of numerous genes, and are involved in stem cell development, cell senescence and death, and tumorigenesis. Alternatively spliced transcript variants encoding different isoforms have been described for this gene.[provided by RefSeq, Jul 2011]

**Molecular Mass** 76.8 kDa

**AA Sequence** MKAAVDLKPTLTIKTEKVDLELFPSPDMECADVPLLTPSSKEMMSQALKATFSGFTK  
 EQQLGIPKDPQRQWTETHVRDWVMWAVNEFSLKGVDFQKFCMNGAALCALGKDC  
 FLELAPDFVGDILWEHLEILQKEDVKPYQVNGVNPAYPESRYTSDYFISYGIEHAQCV  
 PPSEFSEPSFITESYQTLHPISSEELLSLKYENDYPSVILRDPLQDTLQNDYFAIKQE  
 VVTPDNMCMGRTSRGKLGQDSFESIESYDSCDRLTQSWSSQSSFNSLQRVPSYD  
 SFDSYDPAALPNHKPKGTFKDYVRDRADLNKDKPVIPAAALAGYTGSGPIQLWQFL  
 LELLTDKSCQSFSISWTGDGWEFKLSDPDEVARRWGKRKNPKMNYEKLSRGLRYY

 Tel: 1-631-559-9269 1-516-512-3133

 Email: [info@creative-biomart.com](mailto:info@creative-biomart.com)  Fax: 1-631-938-8127

 45-1 Ramsey Road, Shirley, NY 11967, USA

YDKNIIHKTAGKRYVYRFVCDLQSLGTYPEELHAMLDVKPDADE

**Applications**

Enzyme-linked Immunoabsorbent Assay  
 Western Blot (Recombinant protein)  
 Antibody Production  
 Protein Array

**Notes**

Best use within three months from the date of receipt of this protein.

**Storage**

Store at -80 centigrade. Aliquot to avoid repeated freezing and thawing.

**Storage Buffer**

50 mM Tris-HCl, 10 mM reduced Glutathione, pH=8.0 in the elution buffer.

## GENE INFORMATION

**Gene Name**

[ETS1 v-ets erythroblastosis virus E26 oncogene homolog 1 \(avian\) \[ Homo sapiens \]](#)

**Official Symbol**

[ETS1](#)

**Synonyms**

ETS1; v-ets erythroblastosis virus E26 oncogene homolog 1 (avian); EWSR2, v ets avian erythroblastosis virus E26 oncogene homolog 1; protein C-ets-1; Avian erythroblastosis virus E26 (v ets) oncogene homolog 1; ets protein; ETS 1; FLJ10768; p54; v-ets avian erythroblastosis virus E2 oncogene homolog 1; Avian erythroblastosis virus E26 (v-ets) oncogene homolog-1; ETS-1; EWSR2;

**Gene ID**

[2113](#)

**mRNA Refseq**

[NM\\_001143820](#)

**Protein Refseq**

[NP\\_001137292](#)

 Tel: 1-631-559-9269 1-516-512-3133

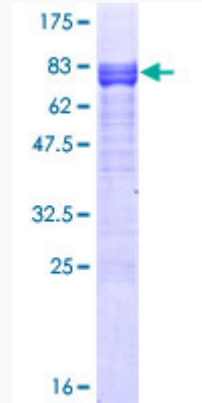
 Email: [info@creative-biomart.com](mailto:info@creative-biomart.com)  Fax: 1-631-938-8127

 45-1 Ramsey Road, Shirley, NY 11967, USA

MIM 164720

UniProt ID P14921

**Quality Control  
Testing**



12.5% SDS-PAGE Stained with Coomassie Blue.

 Tel: 1-631-559-9269 1-516-512-3133

 Email: [info@creative-biomart.com](mailto:info@creative-biomart.com)  Fax: 1-631-938-8127

 45-1 Ramsey Road, Shirley, NY 11967, USA