

## Recombinant Human ETS2 Protein, GST-tagged

Cat. No. ETS2-3529H Lot. No. (See product label)

### SPECIFICATION

<b>Product Overview</b>	Human ETS2 full-length ORF ( NP_005230.1, 1 a.a. - 469 a.a.) recombinant protein with GST-tag at N-terminal.
<b>Species</b>	Human
<b>Source</b>	Wheat Germ
<b>Description</b>	This gene encodes a transcription factor which regulates genes involved in development and apoptosis. The encoded protein is also a protooncogene and shown to be involved in regulation of telomerase. A pseudogene of this gene is located on the X chromosome. Alternative splicing results in multiple transcript variants. [provided by RefSeq, Jan 2012]
<b>Molecular Mass</b>	79.4 kDa
<b>AA Sequence</b>	MNDFGIKNMDQVAPVANSYRGTLKRQPAFDTFDGSLFAVFPSLNEEQTLQEVP TGL DSISHDSANCELPLLTPCSKAVMSQALKATFSGFKKEQRR LGIPKNPWLWSEQQVC QWLLWATNEFSLVNVNLQRFGMNGQMLCNLGKERFLELAPDFVGDILWEHLEQMIK ENQEKTEDQYEENSHLTSVPHWINSNTLGFGEQAPYGMQTQNYPKGGLLD SMCP ASTPSVLSSEQEFQMFPKSRLSSVSVTYCSVSQDFPGSNL NLLTNNSGTPKDHDSP ENGADSFESSDLLQSWNSQSSLLDVQRVPSFESFEDDCS QSLCLNKPTMSFKDYI QERSDPVEQGKPVIPAAVLAGFTGSGPIQLWQFLLELLSDKSCQS FISWTGDGWEF KLADPDEVARRWGRKRNKPKMNYEKL SRGLRYYYDKNIIHKTS GKRYVYRFVCDLQ NLLGFTPEELHAILGVQPDTED

 Tel: 1-631-559-9269 1-516-512-3133

 Email: [info@creative-biomart.com](mailto:info@creative-biomart.com)  Fax: 1-631-938-8127

 45-1 Ramsey Road, Shirley, NY 11967, USA

<b>Applications</b>	Enzyme-linked Immunoabsorbent Assay Western Blot (Recombinant protein) Antibody Production Protein Array
<b>Notes</b>	Best use within three months from the date of receipt of this protein.
<b>Storage</b>	Store at -80 centigrade. Aliquot to avoid repeated freezing and thawing.
<b>Storage Buffer</b>	50 mM Tris-HCl, 10 mM reduced Glutathione, pH=8.0 in the elution buffer.

## GENE INFORMATION

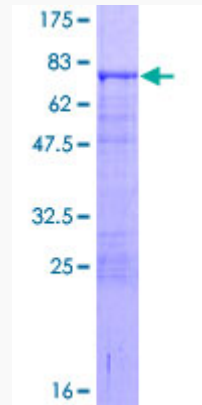
<b>Gene Name</b>	ETS2 v-ets erythroblastosis virus E26 oncogene homolog 2 (avian) [ Homo sapiens ]
<b>Official Symbol</b>	ETS2
<b>Synonyms</b>	ETS2; v-ets erythroblastosis virus E26 oncogene homolog 2 (avian); v ets avian erythroblastosis virus E26 oncogene homolog 2; protein C-ets-2; oncogene ETS-2; v-ets avian erythroblastosis virus E2 oncogene homolog 2; v-ets avian erythroblastosis virus E26 oncogene homolog 2; ETS2IT1;
<b>Gene ID</b>	2114
<b>mRNA Refseq</b>	NM_001256295
<b>Protein Refseq</b>	NP_001243224
<b>MIM</b>	164740
<b>UniProt ID</b>	P15036

 Tel: 1-631-559-9269 1-516-512-3133

 Email: [info@creative-biomart.com](mailto:info@creative-biomart.com)  Fax: 1-631-938-8127

 45-1 Ramsey Road, Shirley, NY 11967, USA

**Quality Control  
Testing**



12.5% SDS-PAGE Stained with Coomassie Blue.

 Tel: 1-631-559-9269 1-516-512-3133

 Email: [info@creative-biomart.com](mailto:info@creative-biomart.com)  Fax: 1-631-938-8127

 45-1 Ramsey Road, Shirley, NY 11967, USA