

Recombinant Human ETV1 protein, GST-tagged

Cat. No. ETV1-1277H Lot. No. (See product label)

SPECIFICATION

Product Overview	Recombinant Human ETV1 protein(127-477 aa), fused with N-terminal GST tag, was expressed in E. coli.
ProteinLength	127-477 aa
Tag	N-GST
Form	The purified protein was Lyophilized from sterile PBS (58mM Na ₂ HPO ₄ , 17mM NaH ₂ PO ₄ , 68mM NaCl, pH7.4). 5 % trehalose and 5 % mannitol are added as protectant before lyophilization.
Purity	85%, by SDS-PAGE with Coomassie Brilliant Blue staining.
Storage	Short-term storage: Store at 2-8°C for (1-2 weeks). Long-term storage: Aliquot and store at -20°C to -80°C for up to 3 months, reconstitution with sterile water and addition of an equal volume of glycerol. Avoid repeat freeze-thaw cycles.
Reconstitution	Reconstitute at 0.25 µg/µl in 200 µl sterile water for short-term storage. After reconstitution with sterile water, if glycerol has no effect on subsequent experiments, it is recommended to add an equal volume of glycerol for long-term storage.
AA Sequence	KPQVGMRPSNPPTPSSTPVSPLHHASPNSTHTPKPDRAFP AHLPPSQSIPDSSYPM DHRFRRLQLSEPCNSFPPLPTMPREGRPMYQRQMSEPNIFFPPQGFKQEYHDPVYE HNTMVGSAASQSFPPPLMIKQEPRDFAYDSEVPSCHSIYMRQEGFLAHP SRTEGCM FEKGPRQFYDDTCVVPEKFDGDIKQEPGM YREGPTYQRRGSLQLWQFLVALLDDP

 Tel: 1-631-559-9269 1-516-512-3133

 Email: info@creative-biomart.com  Fax: 1-631-938-8127

 45-1 Ramsey Road, Shirley, NY 11967, USA



SNSHFIAWTGRGMEFKLIEPEEVARRWGIQKNRPAMNYDKLSRSLRYYYYEKGIMQK
VAGERYVYKFVCDPEALFSMAFPDNQRPLLKTDMERHINEEDTVPLSHFDESMAYM
PEGGCCNPHPYNEGYYVY

GENE INFORMATION

Gene Name	ETV1 ets variant 1 [Homo sapiens]
Official Symbol	ETV1
Synonyms	ETV1; ets variant 1; ets variant gene 1; ETS translocation variant 1; ER81; ets-related protein 81; MGC104699; MGC120533; MGC120534; DKFZp781L0674;
Gene ID	2115
mRNA Refseq	NM_001163147
Protein Refseq	NP_001156619
MIM	600541
UniProt ID	P50549

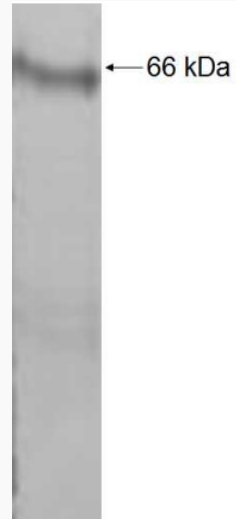
Tel: 1-631-559-9269 1-516-512-3133

Email: info@creative-biomart.com Fax: 1-631-938-8127

45-1 Ramsey Road, Shirley, NY 11967, USA



SDS-PAGE



Tel: 1-631-559-9269 1-516-512-3133

Email: info@creative-biomart.com Fax: 1-631-938-8127

45-1 Ramsey Road, Shirley, NY 11967, USA