

# Recombinant Full Length Human ETV1 Protein, C-Flag-tagged

Cat. No. ETV1-1484HFL Lot. No. (See product label)

## SPECIFICATION

<b>Product Overview</b>	Recombinant Full Length Human ETV1 Protein, fused to Flag-tag at C-terminus, was expressed in Mammalian cells.
<b>Species</b>	Human
<b>Source</b>	Mammalian Cells
<b>Description</b>	<p>This gene encodes a member of the ETS (E twenty-six) family of transcription factors. The ETS proteins regulate many target genes that modulate biological processes like cell growth, angiogenesis, migration, proliferation and differentiation. All ETS proteins contain an ETS DNA-binding domain that binds to DNA sequences containing the consensus 5'-CGGA[AT]-3'. The protein encoded by this gene contains a conserved short acidic transactivation domain (TAD) in the N-terminal region, in addition to the ETS DNA-binding domain in the C-terminal region. This gene is involved in chromosomal translocations, which result in multiple fusion proteins including EWS-ETV1 in Ewing sarcoma and at least 10 ETV1 partners (see PMID: 19657377, Table 1) in prostate cancer. In addition to chromosomal rearrangement, this gene is overexpressed in prostate cancer, melanoma and gastrointestinal stromal tumor. Multiple alternatively spliced transcript variants encoding different isoforms have been identified.</p>
<b>Form</b>	25 mM Tris HCl, pH 7.3, 100 mM glycine, 10% glycerol.
<b>Molecular Mass</b>	55 kDa

 Tel: 1-631-559-9269 1-516-512-3133

 Email: [info@creative-biomart.com](mailto:info@creative-biomart.com)  Fax: 1-631-938-8127

 45-1 Ramsey Road, Shirley, NY 11967, USA

**AA Sequence**

MDGFYDQQVPYMTNSQRGRNCNEKPTNVRKRKFINRDLAHDSEELFQDLSQLQE  
 TWLAEAQVPDNDEQF VPDYQAESLAFHGLPLKIKKEPHSPCSEISSACSQEPPFKF  
 SYGEKCLYNVSAYDQKPQVGMRPSNPPTP SSTPV SPLHHASPNSTHTPKPDRAFP  
 AHLPPSQSIPDSSYPMDHRFRRLSEPCNSFPPLPTMPREGRPM YQRQMSEPNIP  
 FPPQGFKQEYHDPVYEHTMVGSAASQSFPPPLMIKQEPRDFAYDSEVPSCHSIYM  
 RQE GFLAHPSTRTEGCMFEKGPRQFYDDTCVVPEKFDGDIKQEPGMYREGPTYQR  
 RGSLLWQFLVALLDDPSN SHFIAWTGRGMEFKLIEPEEVARRWGIQKNRPAMNY  
 DKLSRSLRYYYEKGIMQKVAGERYVYKFVCDPEA  
 LFSMAFPDNQRPLLKTDMERHINEEDTVPLSHFDESMAYMPEGGCCNPHPYNEGY  
 VYTRTRPLEQKLISEEDLAANDILDYKDDDDKV

**Purity** > 80% as determined by SDS-PAGE and Coomassie blue staining.

**Stability** Stable for 12 months from the date of receipt of the product under proper storage and handling conditions. Avoid repeated freeze-thaw cycles.

**Storage** Store at -80 centigrade.

**Concentration** >50 ug/mL as determined by microplate BCA method.

**Preparation** Recombinant protein was captured through anti-DDK affinity column followed by conventional chromatography steps.

**Protein Families** ES Cell Differentiation/IPS, Transcription Factors

**Full Length** Full L.

## GENE INFORMATION

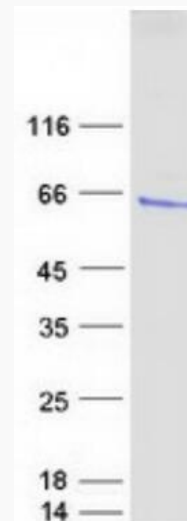
**Gene Name** ETV1 ETS variant transcription factor 1 [ Homo sapiens (human) ]

 Tel: 1-631-559-9269 1-516-512-3133

 Email: [info@creative-biomart.com](mailto:info@creative-biomart.com)  Fax: 1-631-938-8127

 45-1 Ramsey Road, Shirley, NY 11967, USA

<b>Official Symbol</b>	ETV1
<b>Synonyms</b>	ER81
<b>Gene ID</b>	2115
<b>mRNA Refseq</b>	NM_004956.5
<b>Protein Refseq</b>	NP_004947.2
<b>MIM</b>	600541
<b>UniProt ID</b>	P50549



Coomassie blue staining of purified ETV1 protein.

 Tel: 1-631-559-9269 1-516-512-3133

 Email: [info@creative-biomart.com](mailto:info@creative-biomart.com)  Fax: 1-631-938-8127

 45-1 Ramsey Road, Shirley, NY 11967, USA