

# Recombinant Human ETV1 Protein, Myc/DDK-tagged, C13 and N15-labeled

Cat. No. ETV1-4418H Lot. No. (See product label)

## SPECIFICATION

### Product Overview

ETV1 MS Standard C13 and N15-labeled recombinant protein (NP\_004947) with a C-terminal MYC/DDK tag, was expressed in HEK293 cells.

### Species

Human

### Source

HEK293

### Description

This gene encodes a member of the ETS (E twenty-six) family of transcription factors. The ETS proteins regulate many target genes that modulate biological processes like cell growth, angiogenesis, migration, proliferation and differentiation. All ETS proteins contain an ETS DNA-binding domain that binds to DNA sequences containing the consensus 5'-CGGA[AT]-3'. The protein encoded by this gene contains a conserved short acidic transactivation domain (TAD) in the N-terminal region, in addition to the ETS DNA-binding domain in the C-terminal region. This gene is involved in chromosomal translocations, which result in multiple fusion proteins including EWS-ETV1 in Ewing sarcoma and at least 10 ETV1 partners (see PMID: 19657377, Table 1) in prostate cancer. In addition to chromosomal rearrangement, this gene is overexpressed in prostate cancer, melanoma and gastrointestinal stromal tumor. Multiple alternatively spliced transcript variants encoding different isoforms have been identified.

### Molecular Mass

55.1 kDa

 Tel: 1-631-559-9269 1-516-512-3133

 Email: [info@creative-biomart.com](mailto:info@creative-biomart.com)  Fax: 1-631-938-8127

 45-1 Ramsey Road, Shirley, NY 11967, USA

**AA Sequence**

MDGFYDQQVPYMTNSQRGRNCNEKPTNVRKRKFINRDLAHDSEELFQDLSQLQE  
 TWLAEAQVPDNDEQFVPDYQAESLAFHGLPLKIKKEPHSPCSEISSACSQEQPFKFS  
 YGEKCLYNVSAYDQKPQVGMRPSNPPTPSSTPVSPLHHASPNSTHTPKPDRAFFA  
 HLPPSQSIPDSSYPMDHRFRRQLSEPCNSFPPLPTMPREGRPMYQRQMSEPNIPFP  
 PQGFKQEYHDPVYEHNTMVGSAASQSFPPLMIKQEPRDFAYDSEVPSCHSIYMR  
 QEGFLAHPSTRTEGCMFEKGPRQFYDDTCVVPEKFDGDIKQEPGMYREGPTYQRRG  
 SLQLWQFLVALLDDPSNSHFIAWTGRGMEFKLIEPEEVARRWGIQKNRPAMNYDKL  
 SRSLRYYYEKGIMQKVAGERYVYKFCVCDPEALFSMAFPDNQRPLLKTDMERHINEE  
 DTVPLSHFDESMAYMPEGGCCNPHPYNEGYVYTRTRPLEQKLISEEDLAANDILDYK  
 DDDDKV

**Purity** > 80% as determined by SDS-PAGE and Coomassie blue staining

**Stability** Stable for 3 months from receipt of products under proper storage and handling conditions.

**Storage** Store at -80 centigrade. Avoid repeated freeze-thaw cycles.

**Concentration** 50 µg/mL as determined by BCA

**Storage Buffer** 100 mM glycine, 25 mM Tris-HCl, pH 7.3.

## GENE INFORMATION

**Gene Name** ETV1 ets variant 1 [ Homo sapiens (human) ]

**Official Symbol** ETV1

**Synonyms** ETV1; ets variant 1; ets variant gene 1; ETS translocation variant 1; ER81; ets-related protein 81; MGC104699; MGC120533; MGC120534; DKFZp781L0674;

 Tel: 1-631-559-9269 1-516-512-3133

 Email: [info@creative-biomart.com](mailto:info@creative-biomart.com)  Fax: 1-631-938-8127

 45-1 Ramsey Road, Shirley, NY 11967, USA

Gene ID 2115

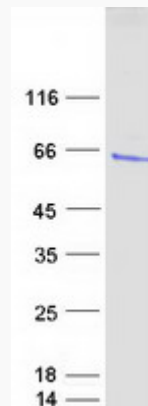
mRNA Refseq NM\_004956

Protein Refseq NP\_004947

MIM 600541

UniProt ID P50549

SDS-PAGE



Tel: 1-631-559-9269 1-516-512-3133

Email: [info@creative-biomart.com](mailto:info@creative-biomart.com) Fax: 1-631-938-8127

45-1 Ramsey Road, Shirley, NY 11967, USA