

# Recombinant Full Length Human ETV6 Protein, C-Flag-tagged

Cat. No. ETV6-1247HFL Lot. No. (See product label)

## SPECIFICATION

<b>Product Overview</b>	Recombinant Full Length Human ETV6 Protein, fused to Flag-tag at C-terminus, was expressed in Mammalian cells.
<b>Species</b>	Human
<b>Source</b>	Mammalian Cells
<b>Description</b>	This gene encodes an ETS family transcription factor. The product of this gene contains two functional domains: a N-terminal pointed (PNT) domain that is involved in protein-protein interactions with itself and other proteins, and a C-terminal DNA-binding domain. Gene knockout studies in mice suggest that it is required for hematopoiesis and maintenance of the developing vascular network. This gene is known to be involved in a large number of chromosomal rearrangements associated with leukemia and congenital fibrosarcoma.
<b>Form</b>	25 mM Tris HCl, pH 7.3, 100 mM glycine, 10% glycerol.
<b>Molecular Mass</b>	52.8 kDa
<b>AA Sequence</b>	MSETPAQCSEIKQERISYTPPEPVPSYASSTPLHVPVPRALRMEEDSIRLPAPHLRLQP IYWSRDDVAQWL KWAENEFSLRPIDSNTEFEMNGKALLLLTKEDFRYRSPHSGDVLY ELLQHILKQRKPRILFSPFFHPGNSI HTQPEVILHQNHEEDNCVQRTPRPSVDNVHH NPPTIELLHRSRSPITTNHRPSPDPEQRPLRSPLDNMIR RLSPAERAQGPRPHQEN NHQESYPLSVSPMENNHCASSESHPKPSSPRQESTRVIQLMPSPIMHPLILN PRH SVDFKQSRLSEDGLHREGKPINLSHREDLAYMNHIMVSVSPPEEHAMPIGRIADCRL

 Tel: 1-631-559-9269 1-516-512-3133

 Email: [info@creative-biomart.com](mailto:info@creative-biomart.com)  Fax: 1-631-938-8127

 45-1 Ramsey Road, Shirley, NY 11967, USA

LWDYVYQLLS DSRYENFIRWEDKESKIFRIVDPNGLARLWGNHKNRTNMTYEKMS  
 RALRHYYKLNIRKEPGQROLLFRFM  
 KTPDEIMSGRTRDRLEHLESQELDEQIQEDECSPTRTRPLEQKLISEEDLAANDILD  
 YKDDDDKV

<b>Purity</b>	> 80% as determined by SDS-PAGE and Coomassie blue staining.
<b>Stability</b>	Stable for 12 months from the date of receipt of the product under proper storage and handling conditions. Avoid repeated freeze-thaw cycles.
<b>Storage</b>	Store at -80 centigrade.
<b>Concentration</b>	>50 ug/mL as determined by microplate BCA method.
<b>Preparation</b>	Recombinant protein was captured through anti-DDK affinity column followed by conventional chromatography steps.
<b>Protein Families</b>	Druggable Genome, Transcription Factors
<b>Protein Pathways</b>	Dorso-ventral axis formation
<b>Full Length</b>	Full L.

## GENE INFORMATION

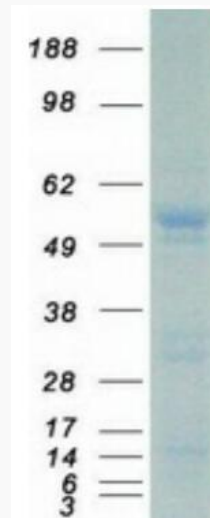
<b>Gene Name</b>	ETV6 ETS variant transcription factor 6 [ Homo sapiens (human) ]
<b>Official Symbol</b>	ETV6
<b>Synonyms</b>	TEL; THC5; TEL/ABL

 Tel: 1-631-559-9269 1-516-512-3133

 Email: [info@creative-biomart.com](mailto:info@creative-biomart.com)  Fax: 1-631-938-8127

 45-1 Ramsey Road, Shirley, NY 11967, USA

Gene ID	2120
mRNA Refseq	NM_001987.5
Protein Refseq	NP_001978.1
MIM	600618
UniProt ID	P41212



Coomassie blue staining of purified ETV6 protein.

Tel: 1-631-559-9269 1-516-512-3133

Email: [info@creative-biomart.com](mailto:info@creative-biomart.com) Fax: 1-631-938-8127

45-1 Ramsey Road, Shirley, NY 11967, USA