

Recombinant Human ETV6 Protein, GST-tagged

Cat. No. ETV6-3540H Lot. No. (See product label)

SPECIFICATION

Product Overview Human ETV6 full-length ORF (AAH43399, 1 a.a. - 452 a.a.) recombinant protein with GST-tag at N-terminal.

Species Human

Source Wheat Germ

Description This gene encodes an ETS family transcription factor. The product of this gene contains two functional domains: a N-terminal pointed (PNT) domain that is involved in protein-protein interactions with itself and other proteins, and a C-terminal DNA-binding domain. Gene knockout studies in mice suggest that it is required for hematopoiesis and maintenance of the developing vascular network. This gene is known to be involved in a large number of chromosomal rearrangements associated with leukemia and congenital fibrosarcoma. [provided by RefSeq, Sep 2008]

Molecular Mass 75.46 kDa

AA Sequence

```
MSETPAQCSEIKQERISYTPPEPVPSYASSTPLHVPVPRALRMEEDSIRLPAHLRLQP
IYWSRDDVAQWLKWAENEFSLRPIDSNTFEMNGKALLLLTKEDFRYRSPHSGDVLY
ELLQHILKQRKPRILFSPFFHPGNSIHTQPEVILHQNHEEDNCVQRTPRPSVDNVHHN
PPTIELLHRSPITTNHRPSDPQERPLRSPLDNMIRRLSPAERAQGPRPHQENNH
QESYPLSVSPMENNHC PASSESHPKPSSPRQESTRVIQLMPSPIMHPLILNPRHSVD
FKQSRLSEGLHREGKPINLSHREDLAYMNHIMVSVSPPEEHAMPIGRIADCRLLED
YVYQLLSDSRYENFIRWEDKESKIFRIVDPNGLARLWGNHKNRTNMTYEKMSRALR
```

 Tel: 1-631-559-9269 1-516-512-3133

 Email: info@creative-biomart.com  Fax: 1-631-938-8127

 45-1 Ramsey Road, Shirley, NY 11967, USA

HYYKLNIIIRKEPGQRLLFRFMKTPDEIMSGRTDRLEHLESQELDEQIQEDEC

Applications

Enzyme-linked Immunoabsorbent Assay
 Western Blot (Recombinant protein)
 Antibody Production
 Protein Array

Notes

Best use within three months from the date of receipt of this protein.

Storage

Store at -80 centigrade. Aliquot to avoid repeated freezing and thawing.

Storage Buffer

50 mM Tris-HCl, 10 mM reduced Glutathione, pH=8.0 in the elution buffer.

GENE INFORMATION

Gene Name

ETV6 ets variant 6 [Homo sapiens]

Official Symbol

ETV6

Synonyms

ETV6; ets variant 6; ets variant gene 6 (TEL oncogene); transcription factor ETV6; TEL; TEL oncogene; TEL1 oncogene; ETS-related protein Tel1; ETS translocation variant 6; TEL/ABL;

Gene ID

2120

mRNA Refseq

NM_001987

Protein Refseq

NP_001978

MIM

600618

 Tel: 1-631-559-9269 1-516-512-3133

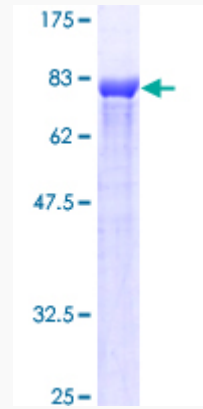
 Email: info@creative-biomart.com  Fax: 1-631-938-8127

 45-1 Ramsey Road, Shirley, NY 11967, USA

UniProt ID

P41212

Quality Control
Testing



12.5% SDS-PAGE Stained with Coomassie Blue.

 Tel: 1-631-559-9269 1-516-512-3133

 Email: info@creative-biomart.com  Fax: 1-631-938-8127

 45-1 Ramsey Road, Shirley, NY 11967, USA