

Recombinant Human ETV6 Protein, Myc/DDK-tagged, C13 and N15-labeled

Cat. No. ETV6-861H **Lot. No.** (See product label)

SPECIFICATION

Product Overview	ETV6 MS Standard C13 and N15-labeled recombinant protein (NP_001978) with a C-terminal MYC/DDK tag, was expressed in HEK293 cells.
Species	Human
Source	HEK293
Description	This gene encodes an ETS family transcription factor. The product of this gene contains two functional domains: a N-terminal pointed (PNT) domain that is involved in protein-protein interactions with itself and other proteins, and a C-terminal DNA-binding domain. Gene knockout studies in mice suggest that it is required for hematopoiesis and maintenance of the developing vascular network. This gene is known to be involved in a large number of chromosomal rearrangements associated with leukemia and congenital fibrosarcoma.
Molecular Mass	53 kDa
AA Sequence	MSETPAQCSIKQERISYTPPESPVPSYASSTPLHVPVPRALRMEEDSIRLPAHLRLQP IYWSRDDVAQWLKWAENEFSLRPIDSNTFEMNGKALLLLTKEDFRYRSPHSGDVLV ELLQHILKQRKPRILFSPFFHPGNSIHTQPEVILHQNHEDNCVQRTPRPSVDNVHHN PPTIELLHRSRSPITTNHRPSDPEQRPLRSPLDNMIRRLSPAERAQGPRPHQENNH QESYPLSVSPMENNHC PASSESHPKPSSPRQESTRVIQLMPSPIMHPLILNPRHSVD FKQSRLSEDGLHREGKPINLSHREDLAYMNHIM/SVSPPEEHAMPIGRIADCRLLD

 Tel: 1-631-559-9269 1-516-512-3133

 Email: info@creative-biomart.com  Fax: 1-631-938-8127

 45-1 Ramsey Road, Shirley, NY 11967, USA

YVYQLLSDSRYENFIRWEDKESKIFRIVDPNGLARLWGNHKNRTNMTYEKMSRALR
 HYYKLNIIIRKEPGQRLLFRFMKTPDEIMSGRTDRLEHLESQELDEQIQEDECSESGPT
 RTRPLEQKLISEEDLAANDILDYKDDDDKV

Purity > 80% as determined by SDS-PAGE and Coomassie blue staining

Stability Stable for 3 months from receipt of products under proper storage and handling conditions.

Storage Store at -80 centigrade. Avoid repeated freeze-thaw cycles.

Concentration 50 µg/mL as determined by BCA

Storage Buffer 100 mM glycine, 25 mM Tris-HCl, pH 7.3.

GENE INFORMATION

Gene Name ETV6 ets variant 6 [Homo sapiens (human)]

Official Symbol ETV6

Synonyms ETV6; ets variant 6; ets variant gene 6 (TEL oncogene); transcription factor ETV6; TEL; TEL oncogene; TEL1 oncogene; ETS-related protein Tel1; ETS translocation variant 6; TEL/ABL;

Gene ID 2120

mRNA Refseq NM_001987

Protein Refseq NP_001978

 Tel: 1-631-559-9269 1-516-512-3133

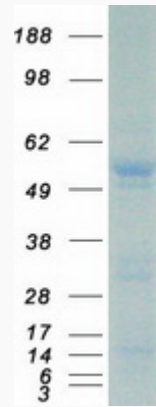
 Email: info@creative-biomart.com  Fax: 1-631-938-8127

 45-1 Ramsey Road, Shirley, NY 11967, USA

MIM 600618

UniProt ID P41212

SDS-PAGE



 Tel: 1-631-559-9269 1-516-512-3133

 Email: info@creative-biomart.com  Fax: 1-631-938-8127

 45-1 Ramsey Road, Shirley, NY 11967, USA