

Recombinant Human EXOC3 Protein, GST-tagged

Cat. No. EXOC3-3556H Lot. No. (See product label)

SPECIFICATION

Product Overview	Human EXOC3 full-length ORF (NP_009208.2, 1 a.a. - 745 a.a.) recombinant protein with GST-tag at N-terminal.
Species	Human
Source	Wheat Germ
Description	The protein encoded by this gene is a component of the exocyst complex, a multiple protein complex essential for targeting exocytic vesicles to specific docking sites on the plasma membrane. Though best characterized in yeast, the component proteins and functions of exocyst complex have been demonstrated to be highly conserved in higher eukaryotes. At least eight components of the exocyst complex, including this protein, are found to interact with the actin cytoskeletal remodeling and vesicle transport machinery. The complex is also essential for the biogenesis of epithelial cell surface polarity. [provided by RefSeq, Jul 2008]
Molecular Mass	112 kDa
AA Sequence	MKETDREAVATAVQQRVAGMLQRPDQLDKVEQYRRREARKKASVEARLKAAIQSQL DGVRTGLSQLHNALNDVKDIQQSLADVSKDWRQSINTIESLKDKDAVVQHSQAAAA VENLKNIFSVPEIVRETQDLIEQGALLQAHRKLMLECSRDLGMYEQYRMDSGNTRD MTLIHGYFGSTQGLSDELAKQLWMLQQRSLVTVRRDPTLLVSVVRIIEREEKIDRRIL DRKKQTGFVPPGRPKNWKEKMFTILERTVTTRIEGTQADTRESDKMWLVVRHLEIIRK YVLLDLIVAKNLMVQCFFPHYEIFKNLLNMYHQALSTRMQDLASEDLEANEIVSLLTW

 Tel: 1-631-559-9269 1-516-512-3133

 Email: info@creative-biomart.com  Fax: 1-631-938-8127

 45-1 Ramsey Road, Shirley, NY 11967, USA

VLNTYTSTEMMRNVELAPEVDVGTLEPLLSPHVVSELLDTYMSTLTSNIIAWLRKALE
 TDKKDWVKETEPEADQDGYQTTLPAIVFQMFEQNLQVAAQISEDLTKTKVLVLCLOQ
 MNSFLSRYKDEAQLYKEEHLRNRQHPHCYVQYMAIINNCQTFKESIVSLKRKYLKNE
 VEEGVSPSQPSMDGILDIAIAKEGCSGLLEEVLFDLEQHLNELMTKKWLLGNSNAVDIIC
 VTVEDYFNDFAKIKKPYKKRMTAEAHRRVVVEYLRAVMQKRISFRSPEERKEGAEK
 MVREAEQLRFLFRKLASGFGEDVDGYCDTIVAVAEVIKLTDPSELLYLEVSTLVSKYPD
 IRDDHIGALLAVRGDASRDMKQTIMETLEQGPAQASPSYVPLFKDIVVPSLNVAKLLK

Applications	Enzyme-linked Immunoabsorbent Assay Western Blot (Recombinant protein) Antibody Production Protein Array
---------------------	---

Notes	Best use within three months from the date of receipt of this protein.
--------------	--

Storage	Store at -80 centigrade. Aliquot to avoid repeated freezing and thawing.
----------------	--

Storage Buffer	50 mM Tris-HCl, 10 mM reduced Glutathione, pH=8.0 in the elution buffer.
-----------------------	--

GENE INFORMATION

Gene Name	EXOC3 exocyst complex component 3 [Homo sapiens]
------------------	--

Official Symbol	EXOC3
------------------------	-------

Synonyms	EXOC3; exocyst complex component 3; SEC6 like 1 (S. cerevisiae) , SEC6L1; Sec6p; SEC6-like 1; Sec 6 homolog; exocyst complex component Sec6; SEC6; SEC6L1;
-----------------	--

Gene ID	11336
----------------	-------

 Tel: 1-631-559-9269 1-516-512-3133

 Email: info@creative-biomart.com  Fax: 1-631-938-8127

 45-1 Ramsey Road, Shirley, NY 11967, USA

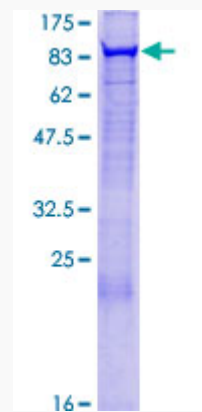
mRNA Refseq [NM_007277](#)

Protein Refseq [NP_009208](#)

MIM [608186](#)

UniProt ID [O60645](#)

**Quality Control
Testing**



12.5% SDS-PAGE Stained with Coomassie Blue.

 Tel: 1-631-559-9269 1-516-512-3133

 Email: info@creative-biomart.com  Fax: 1-631-938-8127

 45-1 Ramsey Road, Shirley, NY 11967, USA