

Recombinant Human EXOC3 Protein, Myc/DDK-tagged, C13 and N15-labeled

Cat. No. EXOC3-4320H **Lot. No.** (See product label)

SPECIFICATION

Product Overview	EXOC3 MS Standard C13 and N15-labeled recombinant protein (NP_009208) with a C-terminal MYC/DDK tag, was expressed in HEK293 cells.
Species	Human
Source	HEK293
Description	The protein encoded by this gene is a component of the exocyst complex, a multiple protein complex essential for targeting exocytic vesicles to specific docking sites on the plasma membrane. Though best characterized in yeast, the component proteins and functions of exocyst complex have been demonstrated to be highly conserved in higher eukaryotes. At least eight components of the exocyst complex, including this protein, are found to interact with the actin cytoskeletal remodeling and vesicle transport machinery. The complex is also essential for the biogenesis of epithelial cell surface polarity.
Molecular Mass	85.6 kDa
AA Sequence	MKETDREAVATAVQQRVAGMLQRPDQLDKVEQYRRREARKKASVEARLKAAIQSQL DGVRTGLSQLHNALNDVKDIQQSLADVSKDWRQSINTIESLKDKDAVVQHSQAAAA VENLKNIFSVPEIVRETQDLIEQGALLQAHRKLMLECSRDLGMYEQYRMDSGNTRD MTLIHGYFGSTQGLSDELAKQLWMLQRSLVTVRRDPTLLVSVVRIIEREEKIDRRIL DRKKQTGFVPPGRPKNWKEKMFTILERTVTTRIEGTQADTRESDKMWLVHRHLEIIRK

 Tel: 1-631-559-9269 1-516-512-3133

 Email: info@creative-biomart.com  Fax: 1-631-938-8127

 45-1 Ramsey Road, Shirley, NY 11967, USA

YVLDDLIVAKNLMVQCFFPHYEIFKNLLNMYHQALSTRMQDLASEDLEANEIVSLLTW
 VLNTYTSTEMMRNVELAPEVDVGTLEPLLSPHVVSELLDTYMSTLTSNIIAWLRKALE
 TDKKDWVKETEPEADQDGYQTTLPAIVFQMFEQNLQVAAQISEDLKTQVLVLCLOQ
 MNSFLSRYKDEAQLYKEEHLRNRQHPHCYVQYMAIINNCQTFKESIVSLKRKYLKNE
 VEEGVSPSQPSMDGILDIAIAKEGCSGLLEEFLDLEQHLNELMTKKWLLGSSNAVDIIC
 VTVEDYFNDFAKIKKPYKKRMTAEAHRRVVVEYLRAVMQKRISFRSPEERKEGAEK
 MVREAEQLRFLFRKLAGSGFGEDVDGYCDTIVAVAEVIKLTDPSELLYLEVSTLVSKYPD
 IRDDHIGALLAVRGDASRDMKQTIMETLEQGPAAQASPSYVPLFKDIVVPSLNVAKLLK
 SGPTRTRPLEQKLISEEDLAANDILDYKDDDDKV

Purity > 80% as determined by SDS-PAGE and Coomassie blue staining

Stability Stable for 3 months from receipt of products under proper storage and handling conditions.

Storage Store at -80 centigrade. Avoid repeated freeze-thaw cycles.

Concentration 50 µg/mL as determined by BCA

Storage Buffer 100 mM glycine, 25 mM Tris-HCl, pH 7.3.

GENE INFORMATION

Gene Name EXOC3 exocyst complex component 3 [Homo sapiens (human)]

Official Symbol EXOC3

Synonyms EXOC3; exocyst complex component 3; SEC6 like 1 (S. cerevisiae), SEC6L1; Sec6p; SEC6-like 1; Sec 6 homolog; exocyst complex component Sec6; SEC6; SEC6L1;

Gene ID 11336

 Tel: 1-631-559-9269 1-516-512-3133

 Email: info@creative-biomart.com  Fax: 1-631-938-8127

 45-1 Ramsey Road, Shirley, NY 11967, USA

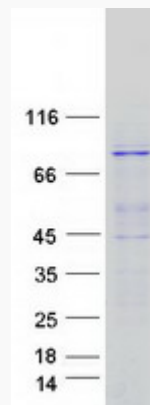
mRNA Refseq [NM_007277](#)

Protein Refseq [NP_009208](#)

MIM [608186](#)

UniProt ID [O60645](#)

SDS-PAGE



 Tel: 1-631-559-9269 1-516-512-3133

 Email: info@creative-biomart.com  Fax: 1-631-938-8127

 45-1 Ramsey Road, Shirley, NY 11967, USA