

Recombinant Human EXOC5 Protein, GST-tagged

Cat. No. EXOC5-3560H **Lot. No.** (See product label)

SPECIFICATION

Product Overview	Human EXOC5 full-length ORF (NP_006535.1, 1 a.a. - 708 a.a.) recombinant protein with GST-tag at N-terminal.
Species	Human
Source	Wheat Germ
Description	The protein encoded by this gene is a component of the exocyst complex, a multiple protein complex essential for targeting exocytic vesicles to specific docking sites on the plasma membrane. Though best characterized in yeast, the component proteins and functions of exocyst complex have been demonstrated to be highly conserved in higher eukaryotes. At least eight components of the exocyst complex, including this protein, are found to interact with the actin cytoskeletal remodeling and vesicle transport machinery. The complex is also essential for the biogenesis of epithelial cell surface polarity. [provided by RefSeq, Jul 2008]
Molecular Mass	108.3 kDa
AA Sequence	MATTAELFEFPFVADEYIERLVWRTPGGGSRGGPEAFDPKRLLLEFVNHIQELQIMD ERIQRKVEKLEQQCQKEAKEFAKKVQELQKSNQVAFQHFQELDEHISYVATKVCHL GDQLEGVNTPRQRAVEAQKLMKYFNEFLDGELKSDVFTNSEKIKEAADIIQKLHLIAQ ELPFDRFSEVKSKIASKYHDLECQLIQEFTSAQRRGEISRMREVAAVLLHFKGYSHC VDVYIKQCQEGAYLRNDIFEDAGILCQRVKNQVGDIFSNPETVLAKLIQNVFEIKLQSF VKEQLEECRKSDAEQYLKNLYDLYTRTTNLSSKLMFNLGTDKQTFLSKLIKSIFISYL

 Tel: 1-631-559-9269 1-516-512-3133

 Email: info@creative-biomart.com  Fax: 1-631-938-8127

 45-1 Ramsey Road, Shirley, NY 11967, USA

ENYIEVETGYLKSRSAMILQRYYYDSKNHQKRSIGTGGIQDLKERIRQRTNLPLGPSID
 THGETFLSQEVVVNLLQETKQAFERCHRLSDPSDLPRNAFRIFTILVEFLCIEHIDYAL
 ETGLAGIPSSDSRNANLYFLDVVQQANTIFHLFDKQFNDHLMPLISSSPKLSECLQKK
 KEIIEQMEMKLDTGIDRTLNCMIGQMKHILAAEQKKTDFKPEDENNVLIQYTNACVKV
 CAYVRKQVEKIKNSMDGKNVDTVLMELGVRFHRLIYEHLQQYSYSCMGMLAICDV
 AEYRCKAKDFKIPMVLHLFDLHALCNLLVVAPDNLKQVCSGEQLANLDKNILHSFVQ
 LRADYRSARLARHFS

Applications	Enzyme-linked Immunoabsorbent Assay Western Blot (Recombinant protein) Antibody Production Protein Array
Notes	Best use within three months from the date of receipt of this protein.
Storage	Store at -80 centigrade. Aliquot to avoid repeated freezing and thawing.
Storage Buffer	50 mM Tris-HCl, 10 mM reduced Glutathione, pH=8.0 in the elution buffer.

GENE INFORMATION

Gene Name	EXOC5 exocyst complex component 5 [Homo sapiens]
Official Symbol	EXOC5
Synonyms	EXOC5; exocyst complex component 5; SEC10 (S. cerevisiae) like 1 , SEC10 like 1 (S. cerevisiae) , SEC10L1; SEC10; SEC10P; SEC10-like 1; exocyst complex component Sec10; HSEC10; PRO1912; SEC10L1; DKFZp666H126;
Gene ID	10640

 Tel: 1-631-559-9269 1-516-512-3133

 Email: info@creative-biomart.com  Fax: 1-631-938-8127

 45-1 Ramsey Road, Shirley, NY 11967, USA

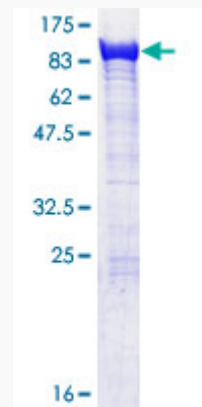
mRNA Refseq NM_006544

Protein Refseq NP_006535

MIM 604469

UniProt ID O00471

**Quality Control
Testing**



12.5% SDS-PAGE Stained with Coomassie Blue.

 Tel: 1-631-559-9269 1-516-512-3133

 Email: info@creative-biomart.com  Fax: 1-631-938-8127

 45-1 Ramsey Road, Shirley, NY 11967, USA