

Recombinant Human EXOC6 Protein, Myc/DDK-tagged, C13 and N15-labeled

Cat. No. EXOC6-4228H **Lot. No.** (See product label)

SPECIFICATION

Product Overview	EXOC6 MS Standard C13 and N15-labeled recombinant protein (NP_061926) with a C-terminal MYC/DDK tag, was expressed in HEK293 cells.
Species	Human
Source	HEK293
Description	The protein encoded by this gene is highly similar to the <i>Saccharomyces cerevisiae</i> SEC15 gene product, which is essential for vesicular traffic from the Golgi apparatus to the cell surface in yeast. It is one of the components of a multiprotein complex required for exocytosis. The 5' portion of this gene and two neighboring cytochrome p450 genes are included in a deletion that results in an autosomal-dominant form of nonsyndromic optic nerve aplasia (ONA). Alternative splicing and the use of alternative promoters results in multiple transcript variants. A paralogous gene encoding a similar protein is present on chromosome 2.
Molecular Mass	93.6 kDa
AA Sequence	MAENSESLGTVPEHERILQEIESTDTACVGPTLRVYDDQPNAHKKFMEKLDACIRN HDKEIEKMCNFHHQGFVDAITELLKVRTDAEKLKVQVTDTNRRFQDAGKEVIVHTEDI IRCRIQQRNITTVEKLQLCLPVLEMYSKLKEQMSAKRYYSALKTMEQLENVYFPWV SQYRFCQLMIENLPKLREDIKEISMSDLKDFLESIRKHSDKIGETAMKQAQHQTFSV SLQKQNKMKFGKNMYINRDRIPEERNETVLKHSLEEEEDENEEEILTVQDLVDFSPVY

 Tel: 1-631-559-9269 1-516-512-3133

 Email: info@creative-biomart.com  Fax: 1-631-938-8127

 45-1 Ramsey Road, Shirley, NY 11967, USA

RCLHIYSVLGDEETFENYYRKQRKKQARLVLPQSNMHETVDGYRRYFTQIVGFFV
VEDHILHVTQGLVTRAYTDELWNMALSIIAVLRAHSSYCTDPDLVLELKNLIVIFADTL
QGYGFPVNRLFDLLFEIRDQYNETLLKKWAGVFRDIFEEDNYSPIPVVNEEEYKIVISK
FPFQDPDLEKQSFPPKFPMSQSVPHIYIQVKEFIYASLKFSESLHRSSTEIDMLRKS
TNLLLTRLSSCLLNLRKPHIGLTELVQIIINTTHLEQACKYLEDFITNITNISQETVHTT
RLYGLSTFKDARHAAEGEIYTKLNQKIDEFVQLADYDWTMSEPDGRASGYLMDLINF
LRSIFQVFTHLPKGVAQTACMSACQHLSTSLMQMLLDSELKQISMGAVQQFNLDVIQ
CELFASSEPVPGFQGDTLQLAFIDLRQLLDLFMVWDWSTYLADYGQPASKYLRVNP
NTALTLEKMKDTSKKNIFAQFGKNDRDKQKLIETVVKQLRSLVNGMSQHMTRTRP
LEQKLISEEDLAANDILDYKDDDDKV

Purity > 80% as determined by SDS-PAGE and Coomassie blue staining

Stability Stable for 3 months from receipt of products under proper storage and handling conditions.

Storage Store at -80 centigrade. Avoid repeated freeze-thaw cycles.

Concentration 50 µg/mL as determined by BCA

Storage Buffer 100 mM glycine, 25 mM Tris-HCl, pH 7.3.

GENE INFORMATION

Gene Name EXOC6 exocyst complex component 6 [Homo sapiens (human)]

Official Symbol EXOC6

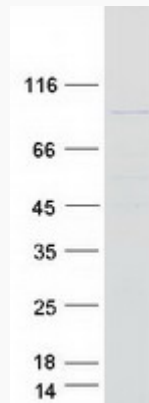
Synonyms EXOC6; exocyst complex component 6; SEC15 like 1 (S. cerevisiae), SEC15L1; DKFZp761I2124; EXOC6A; FLJ1125; MGC33397; SEC15L; Sec15p; SEC15-like 1; SEC15-like protein 1; SEC15-like protein 3; exocyst complex component Sec15A;

 Tel: 1-631-559-9269 1-516-512-3133

 Email: info@creative-biomart.com  Fax: 1-631-938-8127

 45-1 Ramsey Road, Shirley, NY 11967, USA

SEC15; SEC15L1; SEC15L3; FLJ11251;

Gene ID 54536**mRNA Refseq** NM_019053**Protein Refseq** NP_061926**MIM** 609672**UniProt ID** Q8TAG9**SDS-PAGE** Tel: 1-631-559-9269 1-516-512-3133 Email: info@creative-biomart.com  Fax: 1-631-938-8127 45-1 Ramsey Road, Shirley, NY 11967, USA