

Recombinant Human EXOG protein, His-tagged

Cat. No. EXOG-12593H Lot. No. (See product label)

SPECIFICATION

Product Overview	Recombinant Human EXOG protein (141-368 aa) was fused to His-tag and expressed in E.coli.
Species	Human
Source	E.coli
ProteinLength	228
Description	This gene encodes an endo/exonuclease with 5'-3' exonuclease activity. The encoded enzyme catalyzes the hydrolysis of ester linkages at the 5' end of a nucleic acid chain. This enzyme is localized to the mitochondria and may play a role in programmed cell death. Alternatively spliced transcript variants have been described. A pseudogene exists on chromosome 18.
Form	The purified protein was Lyophilized from sterile PBS (58mM Na ₂ HPO ₄ , 17mM NaH ₂ PO ₄ , 68mM NaCl, pH7.). 5% trehalose and 5% mannitol are added as protectants before lyophilization.
Molecular Mass	28 kDa
AA Sequence	FPHLDRTSDIRNICSVDTCCKLLDFQEFTLYLSTRKIEGARSVLRLEKIMENLKNAEIEP DDYFMSRYEKKLEELKAKEQSGTQIRKPS
Purity	95%, by SDS-PAGE with Coomassie Brilliant Blue staining.

 Tel: 1-631-559-9269 1-516-512-3133

 Email: info@creative-biomart.com  Fax: 1-631-938-8127

 45-1 Ramsey Road, Shirley, NY 11967, USA

Storage Store for up to 12 months at -20 to -80 centigrade as lyophilized powder. Storage of Reconstituted Protein: Short-term storage: Store at 2-8 centigrade for (1-2 weeks); Long-term storage: Aliquot and store at -20 to -80 centigrade for up to 3 months, buffer containing 50% glycerol is recommended for reconstitution. Avoid repeat freeze-thaw cycles.

Reconstitution Reconstitute at 0.25 g/μl in 200 μl sterile water for short-term storage. Reconstitution with 200 μl 50% glycerol solution is recommended for longer term storage. If a different concentration is needed for your purposes please adjust the reconstitution volume as required (please note: the ion concentration of the final solution will vary according to the volume used).

Shipping The product is shipped at ambient temperature. Upon receipt, store it immediately at the recommended temperature.

GENE INFORMATION

Gene Name EXOG

Official Symbol EXOG

Synonyms ENGL; ENGLA; ENGLB; ENGL-a; ENGL-b; ENDOGL1; ENDOGL2

Gene ID 9941

mRNA Refseq NM_005107.4

Protein Refseq NP_005098.2

MIM 604051

 Tel: 1-631-559-9269 1-516-512-3133

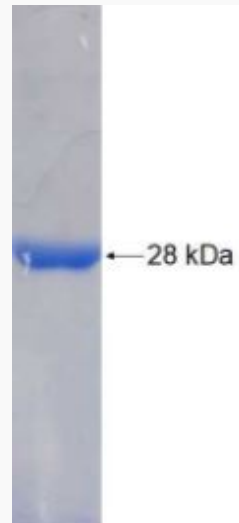
 Email: info@creative-biomart.com  Fax: 1-631-938-8127

 45-1 Ramsey Road, Shirley, NY 11967, USA

UniProt ID

Q9Y2C4

SDS-PAGE of EXOG-
12593H



 Tel: 1-631-559-9269 1-516-512-3133

 Email: info@creative-biomart.com  Fax: 1-631-938-8127

 45-1 Ramsey Road, Shirley, NY 11967, USA