

## Recombinant Human EXOG Protein, GST-tagged

**Cat. No.** EXOG-3565H    **Lot. No.** (See product label)

### SPECIFICATION

<b>Product Overview</b>	Human ENDOGL1 partial ORF ( NP_005098.1, 269 a.a. - 368 a.a.) recombinant protein with GST-tag at N-terminal.
<b>Species</b>	Human
<b>Source</b>	Wheat Germ
<b>Description</b>	This gene encodes an endo/exonuclease with 5'-3' exonuclease activity. The encoded enzyme catalyzes the hydrolysis of ester linkages at the 5' end of a nucleic acid chain. This enzyme is localized to the mitochondria and may play a role in programmed cell death. Alternatively spliced transcript variants have been described. A pseudogene exists on chromosome 18. [provided by RefSeq, Feb 2009]
<b>Molecular Mass</b>	36.74 kDa
<b>AA Sequence</b>	LQDLEKLSGLVFFPHLDRTSDIRNICSVDTCCKLLDFQEFTLYLSTRKIEGARSVLRLEKI MENLKNAEIEPDDYFMSRYEKKLEELKAKEQSGTQIRKPS
<b>Applications</b>	Enzyme-linked Immunoabsorbent Assay Western Blot (Recombinant protein) Antibody Production Protein Array
<b>Notes</b>	Best use within three months from the date of receipt of this protein.

 Tel: 1-631-559-9269    1-516-512-3133

 Email: [info@creative-biomart.com](mailto:info@creative-biomart.com)     Fax: 1-631-938-8127

 45-1 Ramsey Road, Shirley, NY 11967, USA

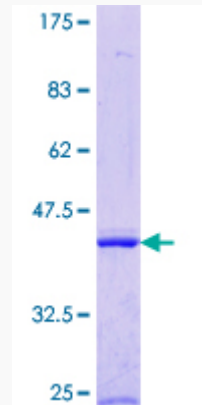
<b>Storage</b>	Store at -80 centigrade. Aliquot to avoid repeated freezing and thawing.
<b>Storage Buffer</b>	50 mM Tris-HCl, 10 mM reduced Glutathione, pH=8.0 in the elution buffer.
<b>GENE INFORMATION</b>	
<b>Gene Name</b>	EXOG endo/exonuclease (5-3), endonuclease G-like [ Homo sapiens ]
<b>Official Symbol</b>	EXOG
<b>Synonyms</b>	EXOG; endo/exonuclease (5-3), endonuclease G-like; ENDOGL1, ENDOGL2, endonuclease G like 1 , endonuclease G like 2; nuclease EXOG, mitochondrial; ENGL; ENGL a; ENGL b; endo G-like 1; endonuclease G-like 1; endonuclease G-like 2; ENGLA; ENGLB; ENGL-a; ENGL-b; ENDOGL1; ENDOGL2; MGC125944; MGC125945;
<b>Gene ID</b>	9941
<b>mRNA Refseq</b>	NM_001145464
<b>Protein Refseq</b>	NP_001138936
<b>MIM</b>	604051
<b>UniProt ID</b>	Q9Y2C4

 Tel: 1-631-559-9269 1-516-512-3133

 Email: [info@creative-biomart.com](mailto:info@creative-biomart.com)  Fax: 1-631-938-8127

 45-1 Ramsey Road, Shirley, NY 11967, USA

**Quality Control  
Testing**



12.5% SDS-PAGE Stained with Coomassie Blue.

 Tel: 1-631-559-9269 1-516-512-3133

 Email: [info@creative-biomart.com](mailto:info@creative-biomart.com)  Fax: 1-631-938-8127

 45-1 Ramsey Road, Shirley, NY 11967, USA