

## Recombinant Human EXOSC9 Protein, GST-tagged

Cat. No. EXOSC9-3582H Lot. No. (See product label)

### SPECIFICATION

<b>Product Overview</b>	Human EXOSC9 partial ORF ( NP_005024, 124 a.a. - 220 a.a.) recombinant protein with GST-tag at N-terminal.
<b>Species</b>	Human
<b>Source</b>	Wheat Germ
<b>Description</b>	This gene encodes a component of the human exosome, a exoribonuclease complex which processes and degrades RNA in the nucleus and cytoplasm. This component may play a role in mRNA degradation and the polymyositis/scleroderma autoantigen complex. Alternative splicing results in multiple transcript variants. [provided by RefSeq, Aug 2011]
<b>Molecular Mass</b>	36.41 kDa
<b>AA Sequence</b>	DPNEREERVMDGLLVIAMNKHREICTIQSSGGIMLLKDQVLRCSKIAGVKVAEITELIL KALENDQKVRKEGGKFGFAESIANQRITAFKMEKAPID
<b>Applications</b>	Enzyme-linked Immunoabsorbent Assay Western Blot (Recombinant protein) Antibody Production Protein Array
<b>Notes</b>	Best use within three months from the date of receipt of this protein.

 Tel: 1-631-559-9269 1-516-512-3133

 Email: [info@creative-biomart.com](mailto:info@creative-biomart.com)  Fax: 1-631-938-8127

 45-1 Ramsey Road, Shirley, NY 11967, USA

**Storage** Store at -80 centigrade. Aliquot to avoid repeated freezing and thawing.

**Storage Buffer** 50 mM Tris-HCl, 10 mM reduced Glutathione, pH=8.0 in the elution buffer.

## GENE INFORMATION

**Gene Name** EXOSC9 exosome component 9 [ Homo sapiens ]

**Official Symbol** EXOSC9

**Synonyms**

EXOSC9; exosome component 9; PMSCL1, polymyositis/scleroderma autoantigen 1, 75kDa; exosome complex component RRP45; p5; p6; PM/ScI 75; polymyositis/scleroderma autoantigen 1 (75kD); RRP45; Rrp45p; autoantigen PM/ScI 1; PMSCL autoantigen, 75kD; exosome complex exonuclease RRP45; polymyositis/scleroderma autoantigen 1, 75kDa; P75 polymyositis-scleroderma overlap syndrome associated autoantigen; P75 polymyositis-scleroderma overlap syndrome-associated autoantigen; PMSCL1; PM/ScI-75;

**Gene ID** 5393

**mRNA Refseq** NM\_001034194

**Protein Refseq** NP\_001029366

**MIM** 606180

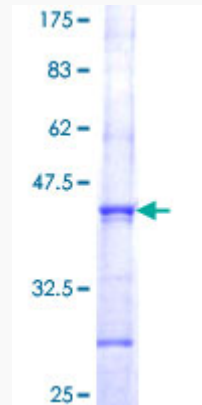
**UniProt ID** Q06265

 Tel: 1-631-559-9269 1-516-512-3133

 Email: [info@creative-biomart.com](mailto:info@creative-biomart.com)  Fax: 1-631-938-8127

 45-1 Ramsey Road, Shirley, NY 11967, USA

**Quality Control  
Testing**



12.5% SDS-PAGE Stained with Coomassie Blue.

 Tel: 1-631-559-9269 1-516-512-3133

 Email: [info@creative-biomart.com](mailto:info@creative-biomart.com)  Fax: 1-631-938-8127

 45-1 Ramsey Road, Shirley, NY 11967, USA