

Recombinant Human EXTL1 Protein, Myc/DDK-tagged, C13 and N15-labeled

Cat. No. EXTL1-2684H **Lot. No.** (See product label)

SPECIFICATION

Product Overview	EXTL1 MS Standard C13 and N15-labeled recombinant protein (NP_004446) with a C-terminal MYC/DDK tag, was expressed in HEK293 cells.
Species	Human
Source	HEK293
Description	This gene is a member of the multiple exostoses (EXT) family of glycosyltransferases, which function in the chain polymerization of heparan sulfate and heparin. The encoded protein harbors alpha 1,4- N-acetylglucosaminyltransferase activity, and is involved in chain elongation of heparan sulfate and possibly heparin.
Molecular Mass	74.7 kDa
AA Sequence	<p>MQSWRRRKSLWLALSASWLLLVLGGFSLRLALPPRPRPGASQGWPRWLDAELL QSFSQPGELPEDAVSPPQAPHGGSCNWESECFDTSKCRGDGLKVFVYPAVGTISET HRRILASIEGSRFYTFSPAGACLLLLSLDAQTGECSSMPLQWNRGRNHLVLRLLHPA PCPRTFQLGQAMVAEASPTVDSFRPGFDVALPFLPEAHPLRGGAPGQLRQHSPQP GVALLALEEERGGWRTADTGSSACPWDGRCEQDPGPGQTQRQETLPNATFCLISG HRPEAASRFLQALQAGCIPVLLSPRWELPFSEVIDWTKAAIVADERLPLQVLAALQE MSPARVLALRQQTQFLWDAYFSSVEKVIHTTLEVIQDRIFGTSAHPSLLWNSPPGAL LALSTFSTSPQDFPFYLLQQGSRPEGRFSALIWVGPPGQPPLKLIQAVAGSQHCAQI LVLWSNERPLPSRWPETA VPLTVIDGHRKVSDRFYPYSTIRTDAILSLDARSSLSTSE</p>

 Tel: 1-631-559-9269 1-516-512-3133

 Email: info@creative-biomart.com  Fax: 1-631-938-8127

 45-1 Ramsey Road, Shirley, NY 11967, USA

VDF AFLVWQSFPERMVGFLTSSSHFWDEAHGGWGYTAERTNEFSMVLTTAAFYHRY
 YHTLFTHSLPKALRTLAD EAPTCVDVLMNFIVA AVTKLPPIKV PYGKQRQE AAP LAPG
 GPGPRPKPPAPAPDCINQIAAAF GHMPLLSSRLRLDPVLFKDPVSVQRKKYRSLEKP
 TRTRPLEQKLISEEDLAANDILDYKDDDDKV

Purity > 80% as determined by SDS-PAGE and Coomassie blue staining

Stability Stable for 3 months from receipt of products under proper storage and handling conditions.

Storage Store at -80 centigrade. Avoid repeated freeze-thaw cycles.

Concentration 50 µg/mL as determined by BCA

Storage Buffer 100 mM glycine, 25 mM Tris-HCl, pH 7.3.

GENE INFORMATION

Gene Name [EXTL1 exostosin like glycosyltransferase 1 \[Homo sapiens \(human\) \]](#)

Official Symbol [EXTL1](#)

Synonyms exostoses (multiple)-like 1; 3515; Ensembl:ENSG00000158008; MGC70794; exostosin-like 1;exostosin-L;multiple exostosis-like protein;alpha-N-acetylglucosaminyltransferase II;glucuronosyl-N-acetylglucosaminyl-proteoglycan 4-alpha-N-acetylglucosaminyltransferase;glucuronyl-N-acetylglucosaminylproteoglycan alpha-1,4-N- acetylglucosaminyltransferase;glucuronosyl-N-acetylglucosaminyl-proteoglycan 4-alpha-N- acetylglucosaminyltransferase; 2.4.1.224; EXTL

Gene ID [2134](#)

 Tel: 1-631-559-9269 1-516-512-3133

 Email: info@creative-biomart.com  Fax: 1-631-938-8127

 45-1 Ramsey Road, Shirley, NY 11967, USA

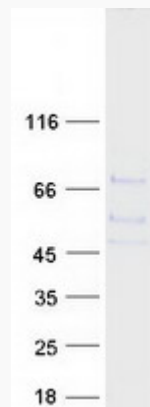
mRNA Refseq [NM_004455](#)

Protein Refseq [NP_004446](#)

MIM [601738](#)

UniProt ID [Q92935](#)

SDS-PAGE



 Tel: 1-631-559-9269 1-516-512-3133

 Email: info@creative-biomart.com  Fax: 1-631-938-8127

 45-1 Ramsey Road, Shirley, NY 11967, USA