

Recombinant Human EXTL1 Protein, GST-tagged

Cat. No. EXTL1-3587H **Lot. No.** (See product label)

SPECIFICATION

Product Overview	Human EXTL1 partial ORF (NP_004446, 141 a.a. - 241 a.a.) recombinant protein with GST-tag at N-terminal.
Species	Human
Source	Wheat Germ
Description	This gene is a member of the multiple exostoses (EXT) family of glycosyltransferases, which function in the chain polymerization of heparan sulfate and heparin. The encoded protein harbors alpha 1,4- N-acetylglucosaminyltransferase activity, and is involved in chain elongation of heparan sulfate and possibly heparin. [provided by RefSeq, Jul 2008]
Molecular Mass	36.85 kDa
AA Sequence	AQTGECSSMPLQWNRGRNHLVLRHPAPCPRTFQLGQAMVAEASPTVDSFRPGFD VALPFLPEAHPLRGGAPGQLRQHSPQPGVALLALEEERGGWRTADT
Applications	Enzyme-linked Immunoabsorbent Assay Western Blot (Recombinant protein) Antibody Production Protein Array
Notes	Best use within three months from the date of receipt of this protein.

 Tel: 1-631-559-9269 1-516-512-3133

 Email: info@creative-biomart.com  Fax: 1-631-938-8127

 45-1 Ramsey Road, Shirley, NY 11967, USA

Storage Store at -80 centigrade. Aliquot to avoid repeated freezing and thawing.

Storage Buffer 50 mM Tris-HCl, 10 mM reduced Glutathione, pH=8.0 in the elution buffer.

GENE INFORMATION

Gene Name EXTL1 exostoses (multiple)-like 1 [Homo sapiens]

Official Symbol EXTL1

Synonyms

exostoses (multiple)-like 1; 3515; Ensembl:ENSG00000158008; MGC70794; exostosin-like 1;exostosin-L;multiple exostosis-like protein;alpha-N-acetylglucosaminyltransferase II;glucuronosyl-N-acetylglucosaminyl-proteoglycan 4-alpha-N-acetylglucosaminyltransferase;glucuronyl-N-acetylglucosaminylproteoglycan alpha-1,4-N- acetylglucosaminyltransferase;glucuronosyl-N-acetylglucosaminyl-proteoglycan 4-alpha-N- acetylglucosaminyltransferase; 2.4.1.224; EXTL

Gene ID 2134

mRNA Refseq NM_004455

Protein Refseq NP_004446

MIM 601738

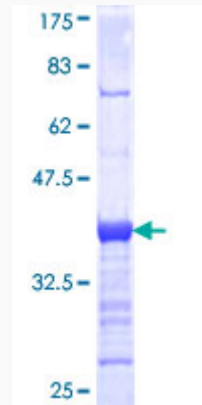
UniProt ID Q92935

 Tel: 1-631-559-9269 1-516-512-3133

 Email: info@creative-biomart.com  Fax: 1-631-938-8127

 45-1 Ramsey Road, Shirley, NY 11967, USA

**Quality Control
Testing**



12.5% SDS-PAGE Stained with Coomassie Blue.

 Tel: 1-631-559-9269 1-516-512-3133

 Email: info@creative-biomart.com  Fax: 1-631-938-8127

 45-1 Ramsey Road, Shirley, NY 11967, USA