

# Recombinant Human EXTL2 Protein, Myc/DDK-tagged, C13 and N15-labeled

**Cat. No.** EXTL2-1003H    **Lot. No.** (See product label)

## SPECIFICATION

### Product Overview

EXTL2 MS Standard C13 and N15-labeled recombinant protein (NP\_001430) with a C-terminal MYC/DDK tag, was expressed in HEK293 cells.

### Species

Human

### Source

HEK293

### Description

EXTL2 (Exostosin Like Glycosyltransferase 2) is a Protein Coding gene. Diseases associated with EXTL2 include Hereditary Multiple Exostoses and Breast Pericanalicular Fibroadenoma. Among its related pathways are Metabolism and heparan sulfate biosynthesis. Gene Ontology (GO) annotations related to this gene include transferase activity, transferring hexosyl groups and alpha-1,4-N-acetylgalactosaminyltransferase activity. An important paralog of this gene is EXT1.

### Molecular Mass

37.5 kDa

### AA Sequence

MRCCHICKLPGRVMGIRVLRSLVILVLLL VAGALTALLPSVKEDKMLMLRREIKSQ  
GKSTMDSFTLIMQTYNRTDLLL KLLNHYQAVPNLHKVIVVWNNIGEKAPDELWNSLG  
PHPIPVIFKQQTANRMRNRLQVFPELETNAVLMVDDDTLISTTDLVFAFSVWQQFPD  
QIVGFVPRKHVSTSSGIYSYGSFEMQAPGSGNGDQYSMVLIGASFFNSKYLELFQR  
QPAAVHALIDDTQNCDDIAMNFIIAKHIGKTS GIFVKPVNMDNLEKETNSGYSGMWH  
RAEHALQRSYCINKLVNIYDSMPLRYSNIMISQFGFPYANYKRKITRTRPLEQKLISEE  
DLAANDILDYKDDDDKV

 Tel: 1-631-559-9269    1-516-512-3133

 Email: [info@creative-biomart.com](mailto:info@creative-biomart.com)     Fax: 1-631-938-8127

 45-1 Ramsey Road, Shirley, NY 11967, USA

<b>Purity</b>	> 80% as determined by SDS-PAGE and Coomassie blue staining
<b>Stability</b>	Stable for 3 months from receipt of products under proper storage and handling conditions.
<b>Storage</b>	Store at -80 centigrade. Avoid repeated freeze-thaw cycles.
<b>Concentration</b>	50 µg/mL as determined by BCA
<b>Storage Buffer</b>	100 mM glycine, 25 mM Tris-HCl, pH 7.3.

## GENE INFORMATION

<b>Gene Name</b>	EXTL2 exostosin like glycosyltransferase 2 [ Homo sapiens (human) ]
<b>Official Symbol</b>	EXTL2
<b>Synonyms</b>	EXTL2; exostoses (multiple)-like 2; exostosin-like 2; alpha 1; 4 N acetylhexosaminyltransferase; alpha-GalNAcT EXTL2; EXT-related protein 2; processed exostosin-like 2; alpha-1,4-N-acetylhexosaminyltransferase; alpha-1,4-N-acetylhexosaminyltransferase EXTL2; glucuronyl-galactosyl-proteoglycan 4-alpha-N-acetylglucosaminyltransferase; EXTR2;
<b>Gene ID</b>	2135
<b>mRNA Refseq</b>	NM_001439
<b>Protein Refseq</b>	NP_001430
<b>MIM</b>	602411

 Tel: 1-631-559-9269 1-516-512-3133

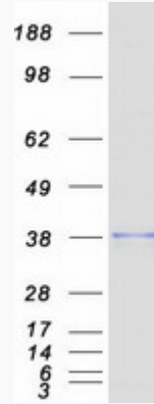
 Email: [info@creative-biomart.com](mailto:info@creative-biomart.com)  Fax: 1-631-938-8127

 45-1 Ramsey Road, Shirley, NY 11967, USA

UniProt ID

Q9UBQ6

SDS-PAGE



 Tel: 1-631-559-9269 1-516-512-3133

 Email: [info@creative-biomart.com](mailto:info@creative-biomart.com)  Fax: 1-631-938-8127

 45-1 Ramsey Road, Shirley, NY 11967, USA