

Recombinant Human EXTL2 Protein, GST-tagged

Cat. No. EXTL2-3588H **Lot. No.** (See product label)

SPECIFICATION

Product Overview	Human EXTL2 full-length ORF (AAH36015, 39 a.a. - 330 a.a.) recombinant protein with GST-tag at N-terminal.
Species	Human
Source	Wheat Germ
Description	EXTL2 (Exostosin Like Glycosyltransferase 2) is a Protein Coding gene. Diseases associated with EXTL2 include Hereditary Multiple Osteochondromas and Mucopolysaccharidoses. Among its related pathways are heparan sulfate biosynthesis and Metabolism. GO annotations related to this gene include transferase activity, transferring hexosyl groups and alpha-1,4-N-acetylgalactosaminyltransferase activity. An important paralog of this gene is EXTL3.
Molecular Mass	57.86 kDa
AA Sequence	LLPSVKEDKMLMLRREIKSQGKSTMSFTLIMQTYNRTDLLLKLLNHYQAVPNLHKVI VWVNNIGEKAPDELWNSLGPPIPVIKQQTANRMRNRLQVFPELETNAVLMVDDD TLISTPDLVFAFSVWQQFPDQIVGFVPRKHVSTSSGIYSYGSFEMQAPGSGNGDQY SMVLIGASFFNSKYLELFQRQPAAVHALIDDTQNCDDIAMNFIIAKHIGKTSGIFVKPV NMDNLEKETNSGYSGMWHRAEHALQRSYCINKLVNIYDSMPLRYSNITISQFGFPYA NYKRKI
Applications	Enzyme-linked Immunoabsorbent Assay Western Blot (Recombinant protein)

 Tel: 1-631-559-9269 1-516-512-3133

 Email: info@creative-biomart.com  Fax: 1-631-938-8127

 45-1 Ramsey Road, Shirley, NY 11967, USA

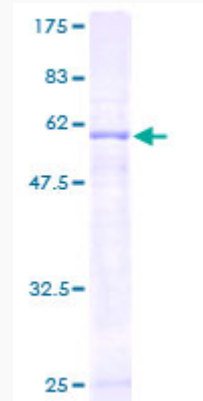
	Antibody Production Protein Array
Notes	Best use within three months from the date of receipt of this protein.
Storage	Store at -80 centigrade. Aliquot to avoid repeated freezing and thawing.
Storage Buffer	50 mM Tris-HCl, 10 mM reduced Glutathione, pH=8.0 in the elution buffer.
GENE INFORMATION	
Gene Name	EXTL2 exostoses (multiple)-like 2 [Homo sapiens]
Official Symbol	EXTL2
Synonyms	EXTL2; exostoses (multiple)-like 2; exostosin-like 2; alpha 1; 4 N acteylhexosaminyltransferase; alpha-GalNAcT EXTL2; EXT-related protein 2; processed exostosin-like 2; alpha-1,4-N-acetylhexosaminyltransferase; alpha-1,4-N- acetylhexosaminyltransferase EXTL2; glucuronyl-galactosyl-proteoglycan 4-alpha-N- acetylglucosaminyltransferase; EXTR2;
Gene ID	2135
mRNA Refseq	NM_001033025
Protein Refseq	NP_001028197
MIM	602411
UniProt ID	Q9UBQ6

 Tel: 1-631-559-9269 1-516-512-3133

 Email: info@creative-biomart.com  Fax: 1-631-938-8127

 45-1 Ramsey Road, Shirley, NY 11967, USA

**Quality Control
Testing**



12.5% SDS-PAGE Stained with Coomassie Blue.

 Tel: 1-631-559-9269 1-516-512-3133

 Email: info@creative-biomart.com  Fax: 1-631-938-8127

 45-1 Ramsey Road, Shirley, NY 11967, USA