

# Recombinant Full Length Human EXTL2 Protein, Flag-tagged

Cat. No. EXTL2-4451HF Lot. No. (See product label)

## SPECIFICATION

<b>Product Overview</b>	Recombinant protein of human exostosins (multiple)-like 2 (EXTL2), transcript variant 1 with C-terminal DDK/His tag, expressed in human cells.
<b>Species</b>	Human
<b>Source</b>	HEK293
<b>Protein Length</b>	Full length
<b>Description</b>	Glycosyltransferase required for the biosynthesis of heparan-sulfate and responsible for the alternating addition of beta-1-4-linked glucuronic acid (GlcA) and alpha-1-4-linked N-acetylglucosamine (GlcNAc) units to nascent heparan sulfate chains.
<b>Molecular Mass</b>	37.3 kDa
<b>AA Sequence</b>	MRCCHICKLPGRVMGIRVLRSLVILVLLL VAGALTALLPSVKEDKMLMLRREIKSQ GKSTMDSFTLIMQTYNRTDLLLKL LNHYQAVPNLHKVIVVWNNIGEKAPDELWNSLG PHPIPVIFKQQTANRMRNRLQVFPELETNAVL MVDDDTLISTTDLVFAFSVWQQFPD QIVGFVPRKHVSTSSGIYSYGSFEMQAPGSGNGDQYSMV LIGASFFNSKYLELFQR QPAAVHALIDDTQNCDDIAMNFIIAKHIGKTS GIFVKPVNMDNLEKETNSGYSGMWH RAEHALQRSYCINKLVNIYDSMPLRYSNIMISQFGFPYANYKRKITRTRPLEQKLISEE DLAANDILDYKDDDDKV
<b>Purity</b>	> 80% as determined by SDS-PAGE and Coomassie blue staining

 Tel: 1-631-559-9269 1-516-512-3133

 Email: [info@creative-biomart.com](mailto:info@creative-biomart.com)  Fax: 1-631-938-8127

 45-1 Ramsey Road, Shirley, NY 11967, USA

<b>Notes</b>	For testing in cell culture applications, please filter before use. Note that you may experience some loss of protein during the filtration process.
<b>Stability</b>	Stable for 12 months from the date of receipt of the product under proper storage and handling conditions. Avoid repeated freeze-thaw cycles.
<b>Storage</b>	Store at -80 centigrade.
<b>Concentration</b>	> 0.05 µg/µL as determined by microplate BCA method
<b>Storage Buffer</b>	25 mM Tris-HCl, 100 mM glycine, pH 7.3, 10% glycerol

## GENE INFORMATION

<b>Gene Name</b>	EXTL2 exostosin like glycosyltransferase 2 [ Homo sapiens (human) ]
<b>Official Symbol</b>	EXTL2
<b>Synonyms</b>	EXTL2; exostosin like glycosyltransferase 2; EXTR2; exostosin-like 2; EXT-related protein 2; alpha-1,4-N-acetylhexosaminyltransferase EXTL2; alpha-GalNAcT EXTL2; exostoses (multiple)-like 2; glucuronyl-galactosyl-proteoglycan 4-alpha-N-acetylglucosaminyltransferase; processed exostosin-like 2; EC 2.4.1.223
<b>Gene ID</b>	2135
<b>mRNA Refseq</b>	NM_001439
<b>Protein Refseq</b>	NP_001430
<b>MIM</b>	602411

 Tel: 1-631-559-9269 1-516-512-3133

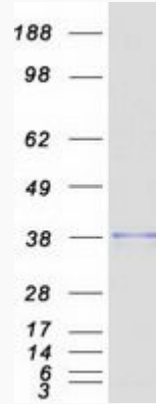
 Email: [info@creative-biomart.com](mailto:info@creative-biomart.com)  Fax: 1-631-938-8127

 45-1 Ramsey Road, Shirley, NY 11967, USA

UniProt ID

Q9UBQ6

WB



 Tel: 1-631-559-9269 1-516-512-3133

 Email: [info@creative-biomart.com](mailto:info@creative-biomart.com)  Fax: 1-631-938-8127

 45-1 Ramsey Road, Shirley, NY 11967, USA