

Recombinant Human EXTL3 Protein, GST-tagged

Cat. No. EXTL3-3589H **Lot. No.** (See product label)

SPECIFICATION

Product Overview	Human EXTL3 full-length ORF (NP_001431.1, 1 a.a. - 919 a.a.) recombinant protein with GST-tag at N-terminal.
Species	Human
Source	Wheat Germ
Description	This gene encodes a single-pass membrane protein which functions as a glycosyltransferase. The encoded protein catalyzes the transfer of N-acetylglucosamine to glycosaminoglycan chains. This reaction is important in heparin and heparan sulfate synthesis. Alternative splicing results in the multiple transcript variants. [provided by RefSeq, Nov 2012]
Molecular Mass	131.1 kDa
AA Sequence	<p>MTGYTMLRNGGAGNGGQTCMLRWSNRIRLTWLSFTLFVILVFFPLIAHYLLTTLDEA DEAGKRIFGPRVGNELCEVKHVL DLCRIRESVSEELLQLEAKRQELNSEIAKLNKIEA CKKSIENAKQDLLQLKNVISQTEHSYKELMAQNQPKLSLPIRLLPEKDDAGLPPP KAT RGCRLHNCFDYSRCPLTSGFPVYVYDSDQFVFGSYLDPLVKQAFQATARANVYVTE NADIACLYVILVGEMQEPVVL RP AELEKQLYSLPHWR TDGHNHVIINLSRKSDTQNL L YNVSTGRAMVAQSTFYTVQYRPGFDLVV SPLVHAMSEPNFMEIPPQVPVKRKYLF T FQGEKIESLRSSLQEARSFEEEMEGDPPADYDDRIIATLKAVQDSKLDQVLVEFTCK NQPKPSLPT EWALCGEREDRLELLKLSTFALIITPGDPRLVISSGCATRLFEALEVGA VPVVLGEQVQLPYQDMLQWNEAALVVPKPRVTEVHFLRLSLSDSDLLAMRRQGRFL</p>

 Tel: 1-631-559-9269 1-516-512-3133

 Email: info@creative-biomart.com  Fax: 1-631-938-8127

 45-1 Ramsey Road, Shirley, NY 11967, USA

WETYFSTADSIFNTVLAMIRTRIQIPAAPIREEAAAEIPHRSGKAAGTDPNMADNGDL
 DLGPFVETEPYASPRYLNRNFTLTVTDFYRSWNCAPGPFHLPHTPFDPVLPSEAKFL
 GSGTGFRPIGGGAGGSGKEFQAALGGNVPREQFTVVMLTYEREEVLMNSLERLNG
 LPYLNKVVVVWNSPKLPSEDLLWPDIGVPIMVVRTEKNSLNNRFLPWNEIETEAILS
 DDDAHLRHDEIMFGFRVWREARDRIVGFPGRYHAWDIPHQSWLYNSNYSCELSMV
 LTGAFFHKYYAYLYSYVMPQAIRDMVDEYINCEDIAMNFLVSHITRKPPIKVTSRWT
 FRCPGCPQALSHDDSHFHERHKCINFFVKVYGYMPLLYTQFRVDSVLFKTRLPKDK
 TKCFKFI

Applications

Enzyme-linked Immunoabsorbent Assay
 Western Blot (Recombinant protein)
 Antibody Production
 Protein Array

Notes

Best use within three months from the date of receipt of this protein.

Storage

Store at -80 centigrade. Aliquot to avoid repeated freezing and thawing.

Storage Buffer

50 mM Tris-HCl, 10 mM reduced Glutathione, pH=8.0 in the elution buffer.

GENE INFORMATION

Gene Name

EXTL3 exostoses (multiple)-like 3 [Homo sapiens]

Official Symbol

EXTL3

Synonyms

EXTL3; exostoses (multiple)-like 3; exostosin-like 3; botv; REG receptor; REGR; reg receptor; EXT-related protein 1; multiple exostosis-like protein 3; putative tumor suppressor protein EXTL3; hereditary multiple exostoses gene isolog; glucuronyl-galactosyl-proteoglycan 4-alpha-N-acetylglucosaminyltransferase; REG; RPR; BOTV; EXTR1; KIAA0519; DKFZp686C2342;

 Tel: 1-631-559-9269 1-516-512-3133

 Email: info@creative-biomart.com  Fax: 1-631-938-8127

 45-1 Ramsey Road, Shirley, NY 11967, USA

Gene ID 2137

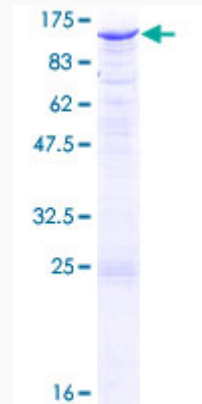
mRNA Refseq NM_001440

Protein Refseq NP_001431

MIM 605744

UniProt ID O43909

**Quality Control
Testing**



12.5% SDS-PAGE Stained with Coomassie Blue.

Tel: 1-631-559-9269 1-516-512-3133

Email: info@creative-biomart.com Fax: 1-631-938-8127

45-1 Ramsey Road, Shirley, NY 11967, USA