

Recombinant Human EXTL3 protein, His-tagged

Cat. No. EXTL3-3750H **Lot. No.** (See product label)

SPECIFICATION

Product Overview	Recombinant Human EXTL3 protein(620-919 aa), fused with N-terminal His tag, was expressed in E.coli.
Species	Human
Source	E.coli
ProteinLength	620-919 aa
Form	The purified protein was Lyophilized from sterile PBS (58mM Na ₂ HPO ₄ , 17mM NaH ₂ PO ₄ , 68mM NaCl, pH7.4). 5 % trehalose and 5 % mannitol are added as protectant before lyophilization.
AASequence	DPVLPSEAKFLGSGTGFRPIGGGAGGSGKEFQAALGGNVPREQFTVVMLTYEREEV LMNSLERLNLPLYNKVVVVWNSPKLPSEDLLWPDIGVPIMVVRTEKNSLNNRFLP WNEIETEAILSIDDDAHLRHDEIMFGFRVWREARDRIVGFPGRYHAWDIPHQSWLYN SNYSCELSMVLGTGAFFHKYYAYLYSYVMPQAIRDMVDEYINCEDIAMNFLVSHITRK PPIKVTSRWTFRCPGCPQALSHDDSHFHERHKCINFFVKVYGYMPLLYTQFRVDSV LFKTRLPHDKTKCFKI
Purity	85%, by SDS-PAGE with Coomassie Brilliant Blue staining.
Storage	Store at 2-8°C for 1-2 weeks. Aliquot and store at -20°C to -80°C for up to 3 months, reconstitution with sterile water and addition of an equal volume of glycerol. Avoid repeat freeze-thaw cycles.

 Tel: 1-631-559-9269 1-516-512-3133

 Email: info@creative-biomart.com  Fax: 1-631-938-8127

 45-1 Ramsey Road, Shirley, NY 11967, USA

Reconstitution

Dissolve the product in 200 µl sterile water to achieve a working concentration of 0.25 g/µl. If experimental compatibility allows, mix the aqueous solution with an equal volume of glycerol (1:1 ratio) after initial reconstitution.

GENE INFORMATION

Gene Name

EXTL3 exostoses (multiple)-like 3 [Homo sapiens]

Official Symbol

EXTL3

Synonyms

EXTL3; exostoses (multiple)-like 3; exostosin-like 3; botv; REG receptor; REGR; reg receptor; EXT-related protein 1; multiple exostosis-like protein 3; putative tumor suppressor protein EXTL3; hereditary multiple exostoses gene isolog; glucuronyl-galactosyl-proteoglycan 4-alpha-N-acetylglucosaminyltransferase; REG; RPR; BOTV; EXTR1; KIAA0519; DKFZp686C2342;

Gene ID

2137

mRNA Refseq

NM_001440

Protein Refseq

NP_001431

MIM

605744

UniProt ID

O43909

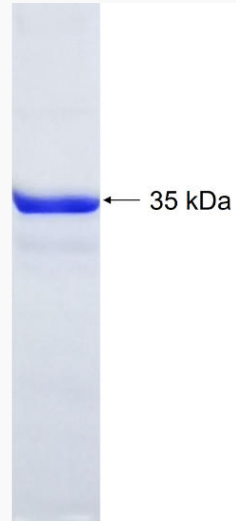
 Tel: 1-631-559-9269 1-516-512-3133

 Email: info@creative-biomart.com  Fax: 1-631-938-8127

 45-1 Ramsey Road, Shirley, NY 11967, USA



SDS-PAGE



Tel: 1-631-559-9269 1-516-512-3133

Email: info@creative-biomart.com Fax: 1-631-938-8127

45-1 Ramsey Road, Shirley, NY 11967, USA