

## Recombinant Human EXTL3 Protein, His-tagged

Cat. No. EXTL3-83H Lot. No. (See product label)

### SPECIFICATION

<b>Product Overview</b>	Recombinant Human EXTL3 protein Lumenal domain(Thr52-Leu919), fused with C-terminal His tag, was expressed in HEK293.
<b>Species</b>	Human
<b>Source</b>	HEK293
<b>ProteinLength</b>	Thr52-Leu919
<b>Tag</b>	C-His
<b>Form</b>	Liquid in sterile PBS, pH7.4.
<b>Molecular Mass</b>	The protein has a calculated MW of 100 kDa.
<b>Endotoxin</b>	<1.0EU per 1µg (determined by the LAL method).
<b>Purity</b>	> 90 % as determined by SDS-PAGE.
<b>Storage</b>	Store it under sterile conditions at -80°C. It is recommended that the protein be aliquoted for optimal storage. Avoid repeated freeze-thaw cycles.
<b>Concentration</b>	1.0 mg/ml.
<b>Reconstitution</b>	Centrifuge the vial at 4°C before opening to recover the entire contents.

 Tel: 1-631-559-9269 1-516-512-3133

 Email: [info@creative-biomart.com](mailto:info@creative-biomart.com)  Fax: 1-631-938-8127

 45-1 Ramsey Road, Shirley, NY 11967, USA

**AA Sequence**

MTTLDEADEAGKRIFGPRVGNELCEVKHVLDLCRIRESVSEELLQLEAKRQELNSEIA  
 KLNLKIEACKKSIENAKQDLLQLKNVISQTEHSYKELMAQNQPKLSLPIRLLPEKDDAG  
 LPPPKATRGCRLHNCFDYSRCPLTSGFPVYVYDSDQFVFGSYLDPLVKQAFQATAR  
 ANVYVTENADIACLYVILVGEMQEPVVLRAPELEKQLYSLPHWRDGHNHVILNSRK  
 SDTQNLLYNVSTGRAMVAQSTFYTVQYRPGFDLVVSPLVHAMSEPNFMEIPPQVPV  
 KRKYLFTFQGEKIESLRSSLQEARSFEEEMEGDPPADYDDRIIATLKAVQDSKLDQVL  
 VEFTCKNQPKPSLPTIEWALCGEREDRLELLKLSTFALIITPGDPRLVISSGCATRLFEA  
 LEVGAVPVVLGEQVQLPYQDMLQWNEAALVVPKPRVTEVHLLRSLSDSDLLAMRR  
 QGRFLWETYFSTADSIFNTVLAMIRTRIQIPAAPIREEAAAEIPHRSGKAAAGTDPNMA  
 DNGDLDLGPVETEPYASPRYLRNFTLTVDFYRSWNCAPGPFHLPHTPFDPVLP  
 SEAKFLGSGTGFRPIGGGAGGSGKEFQAALGGNVPREQFTVVMLTYEREEVLMNS  
 LERLNLPLYLNKVVVVWNSPKLPSEDLLWPDIGVPIMVVRTEKNSLNNRFLPWNEIE  
 TEALSIDDDAHLRHDEIMFGFRVWREARDRIVGFPGRYHAWDIPHQSWLYNSNYSC  
 ELSMVLTGAAFFHKYYAYLYSYVMPQAIRDMVDEYINCEDIAMNFLVSHITRKPPIKV  
 TSRWTFRCPGCPQALSHDDSHFHERHKCINFFVKVYGYMPLLYTQFRVDSVLFKTR  
 LPHDKTKCFKFIHHHHHHHH

**GENE INFORMATION**

**Gene Name** [EXTL3 exostoses \(multiple\)-like 3 \[ Homo sapiens \]](#)

**Official Symbol** [EXTL3](#)

**Synonyms** EXTL3; exostoses (multiple)-like 3; exostosin-like 3; botv; REG receptor; REGR; reg receptor; EXT-related protein 1; multiple exostosis-like protein 3; putative tumor suppressor protein EXTL3; hereditary multiple exostoses gene isolog; glucuronyl-galactosyl-proteoglycan 4-alpha-N-acetylglucosaminyltransferase; REG; RPR; BOTV; EXTR1; KIAA0519; DKFZp686C2342;

**Gene ID** [2137](#)

 Tel: 1-631-559-9269 1-516-512-3133

 Email: [info@creative-biomart.com](mailto:info@creative-biomart.com)  Fax: 1-631-938-8127

 45-1 Ramsey Road, Shirley, NY 11967, USA

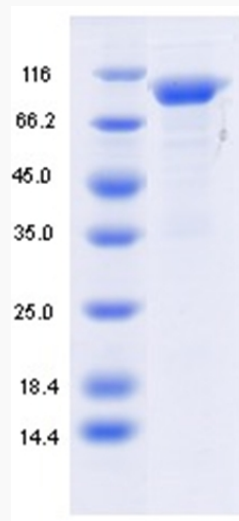
mRNA Refseq [NM\\_001440](#)

Protein Refseq [NP\\_001431](#)

MIM [605744](#)

UniProt ID [O43909](#)

**SDS-PAGE**



 Tel: 1-631-559-9269 1-516-512-3133

 Email: [info@creative-biomart.com](mailto:info@creative-biomart.com)  Fax: 1-631-938-8127

 45-1 Ramsey Road, Shirley, NY 11967, USA