

Recombinant Human EZH2(Y641C) protein, GST-tagged

Cat. No. EZH2-182H Lot. No. (See product label)

SPECIFICATION

Product Overview	Recombinant Human EZH2(Y641C) fused with GST tag at N-terminal was expressed in Insect cells.
Species	Human
Source	Insect Cells
Description	EZH2 (enhancer of zeste homolog 2) belongs to the polycomb group (PcG) protein and acts as the catalytic subunit of the PRC2/EED-EZH2 complex, which methylates 'Lys-27' of histone H3, leading to transcriptional repression of target genes. EZH2 expression is associated with proliferating tissues and shares an overlapping set of target genes with EZH1. Compared to PRC2-EZH1, PRC2-EZH2 exhibits higher levels of histone methyltransferase (HKMT) activity.
Form	50mM Tris-HCl, pH 7.5, 150mM NaCl, 10mM glutathione, 0.1mM EDTA, 0.25mM DTT, 0.1mM PMSF, 25% glycerol.
Molecular Mass	130 kDa
Purity	>75%
Applications	Methyltransferase Assay
Stability	1 year at -70 centigrade from the date of shipment

 Tel: 1-631-559-9269 1-516-512-3133

 Email: info@creative-biomart.com  Fax: 1-631-938-8127

 45-1 Ramsey Road, Shirley, NY 11967, USA

Storage Store product at –70 centigrade. For optimal storage, aliquot target into smaller quantities after centrifugation and store at recommended temperature. For most favorable performance, avoid repeated handling and multiple freeze/thaw cycles.

Concentration 0.1 µg/µl

GENE INFORMATION

Gene Name EZH2 enhancer of zeste homolog 2 (Drosophila) [Homo sapiens]

Official Symbol EZH2

Synonyms EZH2; enhancer of zeste homolog 2 (Drosophila); enhancer of zeste (Drosophila) homolog 2; histone-lysine N-methyltransferase EZH2; ENX 1; EZH1; KMT6; KMT6A; lysine N-methyltransferase 6; ENX1; WVS2; ENX-1; MGC9169;

Gene ID 2146

mRNA Refseq NM_001203247

Protein Refseq NP_001190176

MIM 601573

UniProt ID Q15910

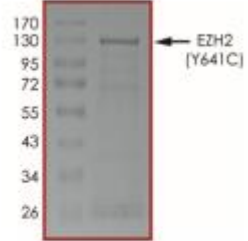
Chromosome Location 7q35-q36

Function DNA binding; histone methyltransferase activity; histone-lysine N-methyltransferase activity; methyltransferase activity; protein binding; transferase activity;

 Tel: 1-631-559-9269 1-516-512-3133

 Email: info@creative-biomart.com  Fax: 1-631-938-8127

 45-1 Ramsey Road, Shirley, NY 11967, USA



 Tel: 1-631-559-9269 1-516-512-3133

 Email: info@creative-biomart.com  Fax: 1-631-938-8127

 45-1 Ramsey Road, Shirley, NY 11967, USA