

Recombinant Human EZH2 Protein (Asn371-Pro746), N-GST tagged

Cat. No. EZH2-2906H Lot. No. (See product label)

SPECIFICATION

| | |
|-------------------------|---|
| Product Overview | Recombinant human EZH2 (Asn371-Pro746) protein fused with the N-GST tag was expressed in E. coli. |
| Species | Human |
| Source | E.coli |
| ProteinLength | Asn371-Pro746 |
| Molecular Mass | 69.53 kDa |
| Purity | >90 % as determined by SDS-PAGE. |
| Notes | For research use only. |
| Storage | Use a manual defrost freezer and avoid repeated freeze thaw cycles. Store at 2 to 8 centigrade for one week. Store at -20 to -80 centigrade for twelve months from the date of receipt. |
| Storage Buffer | 0.01M PBS, pH 7.4, 0.02 % NLS |
| Reconstitution | Reconstitute in sterile water for a stock solution. |
| Shipping | In general, proteins are provided as lyophilized powder/frozen liquid. They are |

 Tel: 1-631-559-9269 1-516-512-3133

 Email: info@creative-biomart.com  Fax: 1-631-938-8127

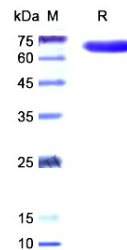
 45-1 Ramsey Road, Shirley, NY 11967, USA

shipped out with dry ice/blue ice unless customers require otherwise.

GENE INFORMATION

| | |
|------------------------|--|
| Gene Name | EZH2 enhancer of zeste homolog 2 (Drosophila) [Homo sapiens (human)] |
| Official Symbol | EZH2 |
| Synonyms | EZH2; enhancer of zeste homolog 2 (Drosophila); enhancer of zeste (Drosophila) homolog 2; histone-lysine N-methyltransferase EZH2; ENX 1; EZH1; KMT6; KMT6A; lysine N-methyltransferase 6; ENX1; WVS2; ENX-1; MGC9169; |
| Gene ID | 2146 |
| mRNA Refseq | NM_001203247 |
| Protein Refseq | NP_001190176 |
| MIM | 601573 |
| UniProt ID | Q15910 |

SDS-PAGE



Tel: 1-631-559-9269 1-516-512-3133

Email: info@creative-biomart.com Fax: 1-631-938-8127

45-1 Ramsey Road, Shirley, NY 11967, USA