

Recombinant Human EZH2 protein, His-tagged

Cat. No. EZH2-45H Lot. No. (See product label)

SPECIFICATION

Product Overview	Recombinant Human EZH2 protein(NP_001190176.1)(Glu51~Phe285) was expressed in E. coli with a N-terminal His Tag.
Species	Human
Source	E.coli
ProteinLength	Glu51~Phe285
Description	This gene encodes a member of the Polycomb-group (PcG) family. PcG family members form multimeric protein complexes, which are involved in maintaining the transcriptional repressive state of genes over successive cell generations. This protein associates with the embryonic ectoderm development protein, the VAV1 oncoprotein, and the X-linked nuclear protein. This protein may play a role in the hematopoietic and central nervous systems. Multiple alternatively spliced transcript variants encoding distinct isoforms have been identified for this gene.
Form	20mM Tris, 150mM NaCl, pH8.0, containing 0.01% SKL, 5% Trehalose.
Molecular Mass	28kDa as determined by SDS-PAGE reducing conditions.
AA Sequence	ERTEILNQEWKQRRRIQPVHILTSVSSLRGTRECSVTSDLDFPTQVIPLKTLNAVASVPI MYSWSPLQQNFMVEDETVLHNIPYMGDEVLDQDGTFFIEELIKNYDGKVVHGDRECGF INDEIFVELVNALGQYNDDDDDDDGDDPEEREKQKDLEDHRDDKESRPPRKFPSPD KIFEAISSMFPDKGTAEELKEKYKELTEQQLPGALPPECTPNIDGPNAKSVQREQSLH

 Tel: 1-631-559-9269 1-516-512-3133

 Email: info@creative-biomart.com  Fax: 1-631-938-8127

 45-1 Ramsey Road, Shirley, NY 11967, USA

	SFHTLF
Endotoxin	<1.0EU per 1g (determined by the LAL method)
Purity	> 95%
Applications	Positive Control; Immunogen; SDS-PAGE; WB. (May be suitable for use in other assays to be determined by the end user.)
Notes	The kit is designed for research use only, we will not be responsible for any issue if the kit was used in clinical diagnostic or any other procedures.
Stability	The thermal stability is described by the loss rate. The loss rate was determined by accelerated thermal degradation test, that is, incubate the protein at 37°C for 48h, and no obvious degradation and precipitation were observed. The loss rate is less than 5% within the expiration date under appropriate storage condition.
Storage	Avoid repeated freeze/thaw cycles. Store at 2-8°C for one month. Aliquot and store at -80°C for 12 months.
Concentration	200g/mL
Reconstitution	Reconstitute in 20mM Tris, 150mM NaCl (pH8.0) to a concentration of 0.1-1.0 mg/mL. Do not vortex.

GENE INFORMATION

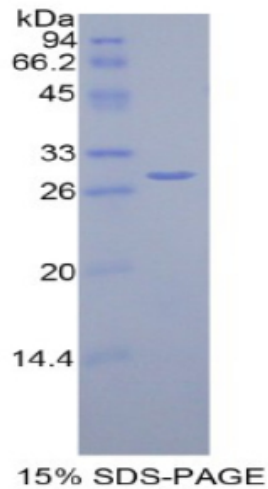
Gene Name	EZH2
Official Symbol	EZH2

 Tel: 1-631-559-9269 1-516-512-3133

 Email: info@creative-biomart.com  Fax: 1-631-938-8127

 45-1 Ramsey Road, Shirley, NY 11967, USA

Synonyms	ENX-1; KMT6; KMT6A; Histone-lysine N-methyltransferase EZH2; Lysine N-methyltransferase 6
Gene ID	2146
mRNA Refseq	NM_001203247.2
Protein Refseq	NP_001190176.1
MIM	601573
UniProt ID	Q15910

SDS-PAGE of EZH2-45H

 Tel: 1-631-559-9269 1-516-512-3133

 Email: info@creative-biomart.com  Fax: 1-631-938-8127

 45-1 Ramsey Road, Shirley, NY 11967, USA