

## Recombinant Human EZH2 protein, His-tagged

Cat. No. EZH2-47H Lot. No. (See product label)

### SPECIFICATION

<b>Product Overview</b>	Recombinant Human EZH2 protein(NP_001190176.1)(Arg494~Val737) was expressed in E. coli with a N-terminal His tag.
<b>Species</b>	Human
<b>Source</b>	E.coli
<b>ProteinLength</b>	Arg494~Val737
<b>Description</b>	This gene encodes a member of the Polycomb-group (PcG) family. PcG family members form multimeric protein complexes, which are involved in maintaining the transcriptional repressive state of genes over successive cell generations. This protein associates with the embryonic ectoderm development protein, the VAV1 oncoprotein, and the X-linked nuclear protein. This protein may play a role in the hematopoietic and central nervous systems. Multiple alternatively spliced transcript variants encoding distinct isoforms have been identified for this gene.
<b>Form</b>	20mM Tris, 150mM NaCl, pH8.0, containing 0.01% SKL, 5% Trehalose.
<b>Molecular Mass</b>	34kDa
<b>AA Sequence</b>	RKHRLWAAHCRKIQLKKGSSNHVYNYQPCDHPRQPCDSSCPCVIAQNFCEKFCQ CSSECQNRFPGCRCKAQCNTKQCPCYLAVRECDPDLCLTCGAADHWDSKNVSK NCSIQRGSKHLLLAPSDVAGWGIFIKDPVQKNEFISEYCGEIIISQDEADRRGKVYDK YMCSFLFNLNDFVVDATRKGNKIRFANHSVNPNCYAKVMMVNGDHRIGIFAKRAIQ

 Tel: 1-631-559-9269 1-516-512-3133

 Email: [info@creative-biomart.com](mailto:info@creative-biomart.com)  Fax: 1-631-938-8127

 45-1 Ramsey Road, Shirley, NY 11967, USA

	TGEELFFDYRYSQADALKYV
<b>Endotoxin</b>	<1.0EU per 1g (determined by the LAL method)
<b>Purity</b>	> 80%
<b>Applications</b>	Positive Control; Immunogen; SDS-PAGE; WB.(May be suitable for use in other assays to be determined by the end user.)
<b>Notes</b>	The kit is designed for research use only, we will not be responsible for any issue if the kit was used in clinical diagnostic or any other procedures.
<b>Stability</b>	The thermal stability is described by the loss rate. The loss rate was determined by accelerated thermal degradation test, that is, incubate the protein at 37°C for 48h, and no obvious degradation and precipitation were observed. The loss rate is less than 5% within the expiration date under appropriate storage condition.
<b>Storage</b>	Avoid repeated freeze/thaw cycles. Store at 2-8°C for one month. Aliquot and store at -80°C for 12 months.
<b>Concentration</b>	250g/mL
<b>Reconstitution</b>	Reconstitute in 20mM Tris, 150mM NaCl (pH8.0) to a concentration of 0.1-1.0 mg/mL. Do not vortex.

## GENE INFORMATION

**Gene Name** EZH2 enhancer of zeste 2 polycomb repressive complex 2 subunit[Homo sapiens (human)]

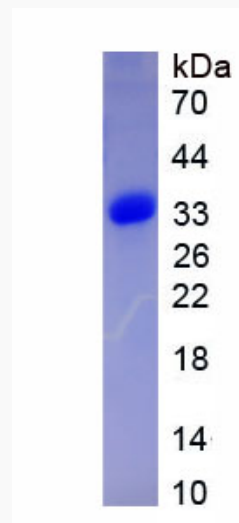
 Tel: 1-631-559-9269 1-516-512-3133

 Email: [info@creative-biomart.com](mailto:info@creative-biomart.com)  Fax: 1-631-938-8127

 45-1 Ramsey Road, Shirley, NY 11967, USA

<b>Official Symbol</b>	<a href="#">EZH2</a>
<b>Synonyms</b>	ENX-1; KMT6; KMT6A; Histone-lysine N-methyltransferase EZH2; Lysine N-methyltransferase 6
<b>Gene ID</b>	<a href="#">2146</a>
<b>mRNA Refseq</b>	<a href="#">NM_001203247.2</a>
<b>Protein Refseq</b>	<a href="#">NP_001190176.1</a>
<b>MIM</b>	<a href="#">601573</a>
<b>UniProt ID</b>	<a href="#">Q15910</a>

**SDS-PAGE of EZH2-47H**



 Tel: 1-631-559-9269 1-516-512-3133

 Email: [info@creative-biomart.com](mailto:info@creative-biomart.com)  Fax: 1-631-938-8127

 45-1 Ramsey Road, Shirley, NY 11967, USA