

Recombinant Human EZH2 protein, His-tagged

Cat. No. EZH2-5744H **Lot. No.** (See product label)

SPECIFICATION

Product Overview	Recombinant Human EZH2 protein(Q15910)(1-746aa), fused with C-terminal His tag, was expressed in Yeast.
Species	Human
Source	Yeast
ProteinLength	1-746aa
Tag	C-His
Form	If the delivery form is liquid, the default storage buffer is Tris/PBS-based buffer, 5%-50% glycerol. If the delivery form is lyophilized powder, the buffer before lyophilization is Tris/PBS-based buffer, 6% Trehalose, pH 8.0.
Molecular Mass	86.8 kDa
Purity	Greater than 90% as determined by SDS-PAGE.
Storage	Store at -20°C/-80°C upon receipt, aliquoting is necessary for mutiple use. Avoid repeated freeze-thaw cycles.
Reconstitution	We recommend that this vial be briefly centrifuged prior to opening to bring the contents to the bottom. Please reconstitute protein in deionized sterile water to a concentration of 0.1-1.0 mg/mL. We recommend to add 5-50% of glycerol (final

 Tel: 1-631-559-9269 1-516-512-3133

 Email: info@creative-biomart.com  Fax: 1-631-938-8127

 45-1 Ramsey Road, Shirley, NY 11967, USA

concentration) and aliquot for long-term storage at -20°C/-80°C.

AA Sequence

MGQTGKKSEKGPVCWRKRVKSEYMRLRQLKRFRRRADEVKSMFSSNRQKILERTEIL
 NQEWKQRRRIQPVHILTSVSSLRGTRECSVTSDLDFPTQVIPLKTLNAVASVPIMYSW
 SPLQQNFMVEDETVLHNIPYMGDEVLDQDGTFFIEELIKNYDGKVHGDRECGFINDEIF
 VELVNALGQYNDDDDDDDDGDDPEEREKQKQDLEDHRDDKESRPPRFPSDKIFEAI
 SSMFPDKGTAEELKEKYKELTEQQLPGALPPECTPNIDGPNAKSVQREQLSHSFHTL
 FCRRCFKYDCFLHPFHATPNTYKRKNTETALDNKPCGPQCYQHLEGAKEFAAALTA
 ERIKTPPKRPGGRRRGRLPNNSSRPSTPTINVLESKDTSDREAGTETGGENNDKE
 EEEKKDETSSSSEANSRCQTPIKMKPNIEPPENVEWSGAEASMFRLVIGTYYYDNFCA
 IARLIGTKTCRQVYEFVRKESSIIAPAPAEDVDTPPRKKKRKHRLWAAHCRKIQLKKD
 GSSNHVYNYQPCDHPRQPCDSSCPCVIAQNFCEKFCQCSSECQNRFPGCRCQAQ
 CNTKQCPCYLAVRECDPDLCLTCGAADHWDSKNVSKNCSIQRGSKKHLLLAPSDV
 AGWGIFIKDPVQKNEFISEYCGEIIISQDEADRRGKVYDKYMCSFLFNLNDFVVDAT
 RKGNKIRFANHSVNPNCYAKVMMVNGDHRIGIFAKRAIQTGEELFFDYRYSQADALK
 YVGIEREMEIP

GENE INFORMATION

Gene Name EZH2 enhancer of zeste homolog 2 (Drosophila) [Homo sapiens]

Official Symbol EZH2

Synonyms EZH2; enhancer of zeste homolog 2 (Drosophila); enhancer of zeste (Drosophila) homolog 2; histone-lysine N-methyltransferase EZH2; ENX 1; EZH1; KMT6; KMT6A; lysine N-methyltransferase 6; ENX1; WVS2; ENX-1; MGC9169;

Gene ID 2146

mRNA Refseq NM_001203247

 Tel: 1-631-559-9269 1-516-512-3133

 Email: info@creative-biomart.com  Fax: 1-631-938-8127

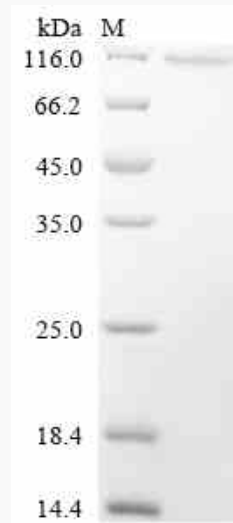
 45-1 Ramsey Road, Shirley, NY 11967, USA

Protein Refseq NP_001190176

MIM 601573

UniProt ID Q15910

SDS-PAGE



 Tel: 1-631-559-9269 1-516-512-3133

 Email: info@creative-biomart.com  Fax: 1-631-938-8127

 45-1 Ramsey Road, Shirley, NY 11967, USA