

# Active Recombinant Full Length Human EZH2 Protein, C-Flag-tagged

**Cat. No.** EZH2-65HFL    **Lot. No.** (See product label)

## SPECIFICATION

<b>Product Overview</b>	Recombinant Full Length Human EZH2 Protein, fused to Flag-tag at C-terminus, was expressed in Mammalian cells.
<b>Species</b>	Human
<b>Source</b>	Mammalian Cells
<b>Description</b>	This gene encodes a member of the Polycomb-group (PcG) family. PcG family members form multimeric protein complexes, which are involved in maintaining the transcriptional repressive state of genes over successive cell generations. This protein associates with the embryonic ectoderm development protein, the VAV1 oncoprotein, and the X-linked nuclear protein. This protein may play a role in the hematopoietic and central nervous systems. Multiple alternatively spliced transcript variants encoding distinct isoforms have been identified for this gene.
<b>Form</b>	25 mM Tris HCl, pH 7.3, 100 mM glycine, 10% glycerol.
<b>Bio-activity</b>	EMSA assay Binding assay (AlphaScreen) In vitro ubiquitination assay substrate
<b>Molecular Mass</b>	85.8 kDa
<b>AA Sequence</b>	MGQTGKKSEKGPVCWRKRVKSEYMRLRQLKRFRRRADEVKSMFSSNRQKILERTEIL

 Tel: 1-631-559-9269    1-516-512-3133

 Email: [info@creative-biomart.com](mailto:info@creative-biomart.com)     Fax: 1-631-938-8127

 45-1 Ramsey Road, Shirley, NY 11967, USA

NQEWKQRRIQPVHI LTSVSSLRGTRECSVTSDLDFPTQVIPLKTLNAVASVPIMYSW  
 SPLQQNFMVEDETVLHNIPYMGDEVLD QDGTFFIEELIKNYDGKVVHGDRECGFINDEI  
 FVELVNALGQYNDDDDDDGDDPEEREKQKDLEDHRDDK ESRPPRKFPSPDKIFE  
 AISSMFPDKGTAEELKEKYKELTEQQLPGALPPECTPNIDGPNAKSVQREQSLHS F  
 HTLFCRRCFKYDCFLHRKCNYSFHATPNTYKRKNTETALDNKPCGPQCYQHLEGAK  
 EFAAALTAERIKT PPKRPGGRRRGRLPNSSSRPSTPTINVLESKDTSDREAGTET  
 GGENNDKEEEEEKDETSSSSEANSRCQ TPIKMKNIEPPENVEWSGAEASMFRVLI  
 GTYYDNFCAIARLIGTKTCRQVYEFVKESSIIAPAPAEDV DTPPRKKRKHRLWAA  
 HCRKIQLKKGSSNHVYNYQPCDHPRQPCDSSCPCVIAQNFCEKFCQCSSECQN R  
 FPGCRCKAQCNTKQCPCYLAVRECDPLCLTCGAADHWDSKNVSKNCSIQRGSK  
 KHLLAPSDVAGWG IFIKDPVQKNEFISEYCGEIIISQDEADRRGKVYDKYMCSFLFNL  
 NNDFVVDATRKGKIRFANHSVNPNC  
 YAKVMMVNGDHRIGIFAKRAIQTGEELFFDYRYSQADALKYVGIEREMEIPTRTRPLE  
 QKLISEEDLAANDILDYKDDDDKV

<b>Purity</b>	> 80% as determined by SDS-PAGE and Coomassie blue staining.
<b>Stability</b>	Stable for 12 months from the date of receipt of the product under proper storage and handling conditions. Avoid repeated freeze-thaw cycles.
<b>Storage</b>	Store at -80 centigrade.
<b>Concentration</b>	>50 ug/mL as determined by microplate BCA method.
<b>Preparation</b>	Recombinant protein was captured through anti-DDK affinity column followed by conventional chromatography steps.
<b>Protein Families</b>	Druggable Genome, Transcription Factors
<b>Full Length</b>	Full L.

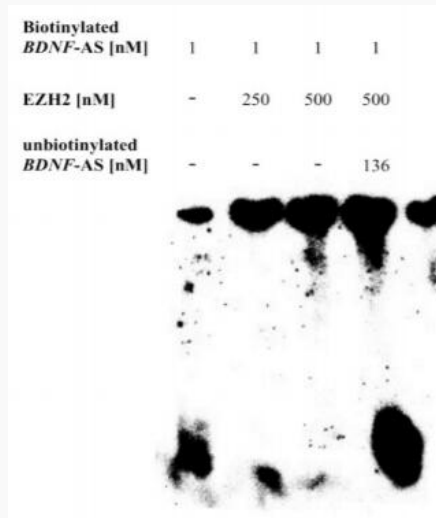
 Tel: 1-631-559-9269 1-516-512-3133

 Email: [info@creative-biomart.com](mailto:info@creative-biomart.com)  Fax: 1-631-938-8127

 45-1 Ramsey Road, Shirley, NY 11967, USA

## GENE INFORMATION

<b>Gene Name</b>	EZH2 enhancer of zeste 2 polycomb repressive complex 2 subunit [ Homo sapiens (human) ]
<b>Official Symbol</b>	EZH2
<b>Synonyms</b>	WVS; ENX1; KMT6; WVS2; ENX-1; EZH2b; KMT6A
<b>Gene ID</b>	2146
<b>mRNA Refseq</b>	NM_004456.5
<b>Protein Refseq</b>	NP_004447.2
<b>MIM</b>	601573
<b>UniProt ID</b>	Q15910

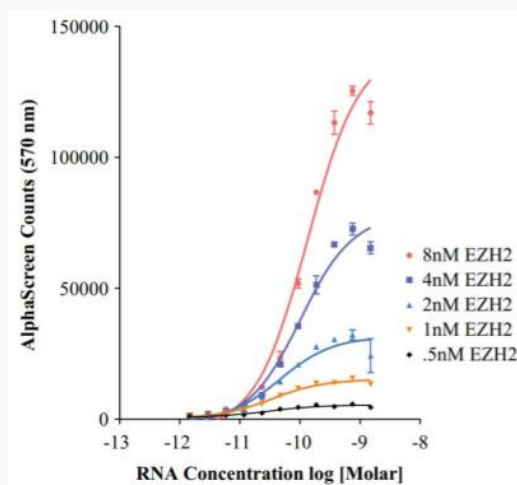


Tel: 1-631-559-9269 1-516-512-3133

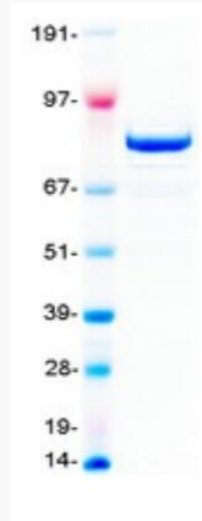
Email: [info@creative-biomart.com](mailto:info@creative-biomart.com) Fax: 1-631-938-8127

45-1 Ramsey Road, Shirley, NY 11967, USA


BDNF non-protein coding antisense transcript (BDNF-AS) interacts directly with EZH2 in the RNA EMSA. Lane 1 (left) shows the migration of free biotinylated BDNF-AS. The addition of increasing concentrations of EZH2 protein (lanes 2 and 3) markedly reduced this migration. The addition of unbiotinylated BDNFAS (lane 4, right) reversed the effect of EZH2 on the migration of biotinylated BDNF-AS.




Optimization of AlphaScreen assay conditions through titrating BDNF non-protein coding antisense transcript (BDNF-AS) in the presence of different concentrations of EZH2 protein.



Coomassie blue staining of purified EZH2 protein.

 Tel: 1-631-559-9269 1-516-512-3133

 Email: [info@creative-biomart.com](mailto:info@creative-biomart.com)  Fax: 1-631-938-8127

 45-1 Ramsey Road, Shirley, NY 11967, USA