

Recombinant Human EZR Protein, MYC/DDK-tagged, C13 and N15-labeled

Cat. No. EZR-190H **Lot. No.** (See product label)

SPECIFICATION

| | |
|-------------------------|---|
| Product Overview | EZR MS Standard C13 and N15-labeled recombinant protein (NP_001104547) with a C-terminal MYC/DDK tag, was expressed in HEK293 cells. |
| Species | Human |
| Source | HEK293 |
| Description | The cytoplasmic peripheral membrane protein encoded by this gene functions as a protein-tyrosine kinase substrate in microvilli. As a member of the ERM protein family, this protein serves as an intermediate between the plasma membrane and the actin cytoskeleton. This protein plays a key role in cell surface structure adhesion, migration and organization, and it has been implicated in various human cancers. A pseudogene located on chromosome 3 has been identified for this gene. Alternatively spliced variants have also been described for this gene. [provided by RefSeq, Jul 2008] |
| Molecular Mass | 69.4 kDa |
| AA Sequence | MPKPINVRVTTMDAELEFAIQPNTTGKQLFDQVVKTIGLREVWYFGLHYVDNKGFP WLKLDKKVSAQEVKRNPLQFKFRAKFYPEDVAEELIQDITQKLFFLQVKEGILSDEIY CPPETA VLLGSYAVQAKFGDYNKEVHKSGYLSSERLIPQRVMDQHKLTRDQWEDRI QVWHAHRGMLKDNAMLEYLKIAQDLEMYGINYFEIKNKKGTDLWLGVDALGLNIYE KDDKLTPKIGFPWSEIRNISFNDKKFVIKPIDKKAPDFV FYAPRLRINKRILQLCMGNH |

 Tel: 1-631-559-9269 1-516-512-3133

 Email: info@creative-biomart.com  Fax: 1-631-938-8127

 45-1 Ramsey Road, Shirley, NY 11967, USA

ELYMRRRKPDITIEVQQMKAQAREEKHQKQLERQQLETEKKRRETVEREKEQMMRE
 KEELMLRLQDYEEKTKKAERELSEQIQRALQLEEERKRAQEEAERLEADRMAALRA
 KEELERQAVDQIKSQEQLAAELAEYTAKIALLEEARRRKEDEVEEWQHRAKEAQDDL
 VKTKEELHLVMTAPPPPPPPVYEPVSYHVQESLQDEGAEPTGYSAELSSEGIRDDR
 NEEKRITEAEKNERVQRQLLTLSSSELSQARDENKRTHNDIIHNENMRQGRDKYKTLR
 QIRQGNTKQRIDEFEALTRTRPLEQKLISEEDLAANDILDYKDDDDKV

| | |
|-----------------------|--|
| Purity | > 80% as determined by SDS-PAGE and Coomassie blue staining |
| Stability | Stable for 3 months from receipt of products under proper storage and handling conditions. |
| Storage | Store at -80 centigrade. Avoid repeated freeze-thaw cycles. |
| Concentration | 50 µg/mL as determined by BCA |
| Storage Buffer | 100 mM glycine, 25 mM Tris-HCl, pH 7.3. |

GENE INFORMATION

| | |
|------------------------|--|
| Gene Name | EZR ezrin [<i>Homo sapiens</i> (human)] |
| Official Symbol | EZR |
| Synonyms | EZR; ezrin; VIL2, villin 2 (ezrin); cytovillin 2; p81; villin-2; villin 2 (ezrin); CVL; CVIL; VIL2; MGC1584; FLJ26216; DKFZp762H157; |
| Gene ID | 7430 |
| mRNA Refseq | NM_001111077 |

 Tel: 1-631-559-9269 1-516-512-3133

 Email: info@creative-biomart.com  Fax: 1-631-938-8127

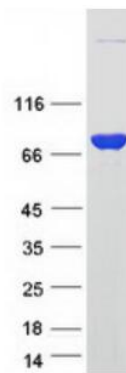
 45-1 Ramsey Road, Shirley, NY 11967, USA

Protein Refseq NP_001104547

MIM 123900

UniProt ID P15311

SDS-PAGE



 Tel: 1-631-559-9269 1-516-512-3133

 Email: info@creative-biomart.com  Fax: 1-631-938-8127

 45-1 Ramsey Road, Shirley, NY 11967, USA