

Recombinant Human EZR Protein, GST-tagged

Cat. No. EZR-3599H Lot. No. (See product label)

SPECIFICATION

Product Overview	Human EZR full-length ORF (AAH13903, 1 a.a. - 586 a.a.) recombinant protein with GST-tag at N-terminal.
Species	Human
Source	Wheat Germ
Description	The cytoplasmic peripheral membrane protein encoded by this gene functions as a protein-tyrosine kinase substrate in microvilli. As a member of the ERM protein family, this protein serves as an intermediate between the plasma membrane and the actin cytoskeleton. This protein plays a key role in cell surface structure adhesion, migration and organization, and it has been implicated in various human cancers. A pseudogene located on chromosome 3 has been identified for this gene. Alternatively spliced variants have also been described for this gene. [provided by RefSeq, Jul 2008]
Molecular Mass	89.98 kDa
AA Sequence	MPKPINVRVTTMDAELEFAIQPNTTGKQLFDQVVKITIGLREVWYFGLHYVDNKGFP WLKLDKKVSAQEVKRNPLQFKFRAKFYPEDVAEELIQDITQKLFFLQVKEGILSDEIY CPPETA VLLGSYAVQAKFGDYNKEVHKSGYLSSERLIPQRVMDQHKLTRDQWEDRI QVWHA EHRGMLKDNAMLEYLKIAQDLEMYGINYFEIKNKKGTDLWLGVDALGLNIYE KDDKLT PKIGFPWSEIRNISFNDKFKVIKPIDKKAPDFVYAPRLRINKRILQLCMGNH ELYMRRRKPDTIEVQQMKAQAREEKHQKQLERQQLETEKKRRETVEREKEQMMRE

 Tel: 1-631-559-9269 1-516-512-3133

 Email: info@creative-biomart.com  Fax: 1-631-938-8127

 45-1 Ramsey Road, Shirley, NY 11967, USA

KEELMLRLQDYEEKTKKAERELSEQIQRALQLEEEERKRAQEEAERLEADRMAALRA
 KEELERQAVDQIKSQEQLAAELAEYTAKIALLEEARRRKEDEVVEEWQHRAKEAQDDL
 VKTKEELHLVMTAPPPPPPPVYEPVSYHVQESLQDEGAEPTGYSAELSSEGIRDDR
 NEEKRITEAEKNERVQRQLLTLSSSELSQARDENKRTHNDIIHNENMRQGRDKYKTLR
 QIRQGNTKQRIDEFEAL

Applications
 Enzyme-linked Immunoabsorbent Assay
 Western Blot (Recombinant protein)
 Antibody Production
 Protein Array

Notes
 Best use within three months from the date of receipt of this protein.

Storage
 Store at -80 centigrade. Aliquot to avoid repeated freezing and thawing.

Storage Buffer
 50 mM Tris-HCl, 10 mM reduced Glutathione, pH=8.0 in the elution buffer.

GENE INFORMATION

Gene Name [EZR ezrin \[Homo sapiens \]](#)

Official Symbol [EZR](#)

Synonyms EZR; ezrin; VIL2, villin 2 (ezrin); cytovillin 2; p81; villin-2; villin 2 (ezrin); CVL; CVIL; VIL2; MGC1584; FLJ26216; DKFZp762H157;

Gene ID [7430](#)

mRNA Refseq [NM_001111077](#)

Protein Refseq [NP_001104547](#)

 Tel: 1-631-559-9269 1-516-512-3133

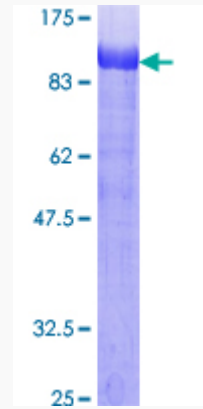
 Email: info@creative-biomart.com  Fax: 1-631-938-8127

 45-1 Ramsey Road, Shirley, NY 11967, USA

MIM 123900

UniProt ID P15311

**Quality Control
Testing**



12.5% SDS-PAGE Stained with Coomassie Blue.

 Tel: 1-631-559-9269 1-516-512-3133

 Email: info@creative-biomart.com  Fax: 1-631-938-8127

 45-1 Ramsey Road, Shirley, NY 11967, USA