

Recombinant Mouse Eda2r Protein (Met1-Thr138), C-His tagged

Cat. No. Eda2r-5787M **Lot. No.** (See product label)

SPECIFICATION

Product Overview	Recombinant mouse EDA2R (Met1-Thr138) fused with the C-terminal His tag was expressed in mammalian cells.
Species	Mouse
Source	Mammalian Cells
ProteinLength	Met1-Thr138
Form	Lyophilized powder/frozen liquid
Molecular Mass	15.18 kDa
Purity	> 90 % as determined by SDS-PAGE
Notes	For research use only.
Storage	Use a manual defrost freezer and avoid repeated freeze thaw cycles. Store at 2 to 8 centigrade for one week. Store at -20 to -80 centigrade for twelve months from the date of receipt.
Storage Buffer	Supplied as solution form in PBS or lyophilized from PBS.
Reconstitution	Reconstitute in sterile water for a stock solution.

 Tel: 1-631-559-9269 1-516-512-3133

 Email: info@creative-biomart.com  Fax: 1-631-938-8127

 45-1 Ramsey Road, Shirley, NY 11967, USA

Shipping

They are shipped out with dry ice/blue ice unless customers require otherwise.

GENE INFORMATION**Gene Name**Eda2r ectodysplasin A2 receptor [*Mus musculus* (house mouse)]**Official Symbol**

Eda2r

Synonyms

EDA2R; ectodysplasin A2 receptor; tumor necrosis factor receptor superfamily member 27; EDA-A2 receptor; X linked ectodysplasin receptor; ectodysplasin A2 isoform receptor; X-linked ectodysplasin-A2 receptor; Xedar; TNFRSF27; 9430060M22Rik; MGC124099;

Gene ID

245527

mRNA Refseq

NM_001161432

Protein Refseq

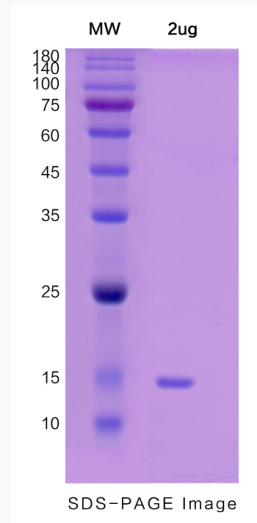
NP_001154904

UniProt ID

Q8BM50

 Tel: 1-631-559-9269 1-516-512-3133 Email: info@creative-biomart.com  Fax: 1-631-938-8127 45-1 Ramsey Road, Shirley, NY 11967, USA

SDS-PAGE



 Tel: 1-631-559-9269 1-516-512-3133

 Email: info@creative-biomart.com  Fax: 1-631-938-8127

 45-1 Ramsey Road, Shirley, NY 11967, USA