

Active Recombinant Rat Edn1 protein, His-tagged

Cat. No. Edn1-2686R **Lot. No.** (See product label)

SPECIFICATION

Product Overview	Active Recombinant Rat Edn1 protein(P22388)(54~202 aa), fused with N-terminal His tag, was expressed in E.coli.
Species	Rat
Source	E.coli
ProteinLength	54-202 aa
Form	Lyophilized from sterile 20mM Tris, 150mM NaCl, pH8.0, containing 1mM EDTA, 1mM DTT, 0.01% SKL, 5% Trehalose and Proclin300.
Bio-activity	Endothelins (EDN) are small (21 amino acids) vasoactive peptides produced by many cell types including endothelial and epithelial cells, macrophages and fibroblasts. By binding to G-protein-linked transmembrane receptors, EDNs participate in vasoconstriction modulation and cell growth regulation. It has been proven that EDN1 has chemotaxis active on monocytes, thus chemotaxis assay used 24-well microchemotaxis system was undertaken to detect the chemotactic effect of EDN1 on the human monocytic cell line THP-1. Briefly, THP-1 cells were seeded into the upper chambers (100uL cell suspension, 10 ⁶ cells/mL in RPMI 1640 with 0.5% FBS) and EDN1 (20ng/mL, 40ng/mL and 80ng/mL diluted separately in serum free RPMI 1640) was added in lower chamber with polycarbonate filter (8µm pore size) used to separate the two compartments. After incubation at 37°C with 5% CO ₂ for 3h, the filter was removed, then cells in lower chamber were observed by inverted microscope at low

 Tel: 1-631-559-9269 1-516-512-3133

 Email: info@creative-biomart.com  Fax: 1-631-938-8127

 45-1 Ramsey Road, Shirley, NY 11967, USA

magnification (×100) and the number of migrated cells were counted at high magnification (×400) randomly (five fields for each filter). Result shows EDN1 is able to induce migration of THP-1 cells. The migrated THP-1 cells in low chamber at low magnification (×100) were shown. Five fields of each chamber were randomly chosen, and the migrated cells were counted at high magnification (×400). Statistical results were shown. The optimum chemotaxis of EDN1 occurs at 80ng/mL.

Molecular Mass	18.5kDa
Purity	> 95% as determined by SDS-PAGE.
Storage	Avoid repeated freeze/thaw cycles. Store at -20°C for 12 months. Aliquot and store at -80°C for 12 months.
Reconstitution	Reconstitute in 20mM Tris, 150mM NaCl (pH8.0) to a concentration of 0.1-1.0 mg/mL. Do not vortex.

GENE INFORMATION

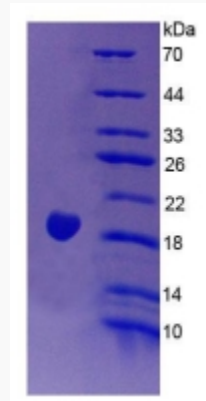
Gene Name	Edn1 endothelin 1 [Rattus norvegicus]
Official Symbol	Edn1
Synonyms	EDN1; endothelin 1; endothelin-1; ET-1; PPET1; preproendothelin-1; Et1;
Gene ID	24323
mRNA Refseq	NM_012548
Protein Refseq	NP_036680

 Tel: 1-631-559-9269 1-516-512-3133

 Email: info@creative-biomart.com  Fax: 1-631-938-8127

 45-1 Ramsey Road, Shirley, NY 11967, USA

SDS-PAGE



Activity

