

Recombinant Rat Efemp1 Protein, His-tagged

Cat. No. Efemp1-236R **Lot. No.** (See product label)

SPECIFICATION

Product Overview	Recombinant Rat Efemp1(Ser166~Val445) fused with His tag at N-terminal was expressed in E. coli.
Species	Rat
Source	E.coli
ProteinLength	Ser166~Val445
Form	PBS, pH7.4, containing 0.01% SKL, 1mM DTT, 5% Trehalose and Proclin300.
Molecular Mass	33.4kDa
Endotoxin	<1.0EU per 1g (determined by the LAL method)
Purity	> 92%
Applications	Positive Control; Immunogen; SDS-PAGE; WB. If bio-activity of the protein is needed, please check active protein.
Stability	The thermal stability is described by the loss rate. The loss rate was determined by accelerated thermal degradation test, that is, incubate the protein at 37 centigrade for 48h, and no obvious degradation and precipitation were observed. The loss rate is less than 5% within the expiration date under appropriate storage condition.

 Tel: 1-631-559-9269 1-516-512-3133

 Email: info@creative-biomart.com  Fax: 1-631-938-8127

 45-1 Ramsey Road, Shirley, NY 11967, USA

Storage	Avoid repeated freeze/thaw cycles. Store at 2-8 centigrade for one month. Aliquot and store at -80 centigrade for 12 months.
----------------	--

Reconstitution	Reconstitute in PBS or others.
-----------------------	--------------------------------

GENE INFORMATION

Gene Name	Efemp1 EGF-containing fibulin-like extracellular matrix protein 1 [Rattus norvegicus]
------------------	---

Official Symbol	Efemp1
------------------------	--------

Synonyms	EFEMP1; EGF-containing fibulin-like extracellular matrix protein 1; FIBL-3; fibulin-3; epidermal growth factor-containing fibulin-like extracellular matrix protein 1; T16;
-----------------	---

Gene ID	305604
----------------	--------

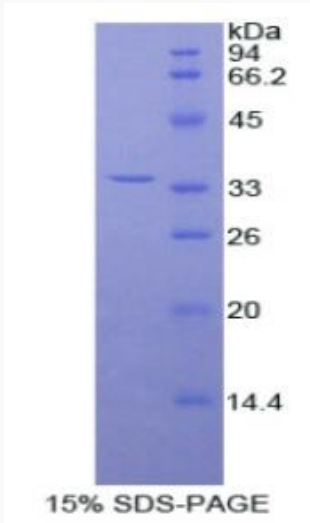
mRNA Refseq	NM_001012039
--------------------	--------------

Protein Refseq	NP_001012039
-----------------------	--------------

 Tel: 1-631-559-9269 1-516-512-3133

 Email: info@creative-biomart.com  Fax: 1-631-938-8127

 45-1 Ramsey Road, Shirley, NY 11967, USA



Tel: 1-631-559-9269 1-516-512-3133

Email: info@creative-biomart.com Fax: 1-631-938-8127

45-1 Ramsey Road, Shirley, NY 11967, USA