

Recombinant Mouse Efemp1 protein, His-tagged

Cat. No. Efemp1-2422M **Lot. No.** (See product label)

SPECIFICATION

Product Overview	Recombinant Mouse Efemp1 protein(Q8BPB5)(Gln18-Phe493), fused with N-terminal His tag, was expressed in HEK293.
Species	Mouse
Source	HEK293
ProteinLength	Gln18-Phe493
Tag	N-His
Form	Supplied as 0.22µm filtered solution in PBS (pH 7.4).
Molecular Mass	The protein has a predicted MW of 54.1 kDa. Due to glycosylation, the protein migrates to 55-70 kDa based on Tris-Bis PAGE result.
Endotoxin	Less than 1EU per µg by the LAL method.
Purity	> 95% as determined by Tris-Bis PAGE
Storage	Valid for 12 months from date of receipt when stored at -80°C. Recommend to aliquot the protein into smaller quantities for optimal storage. Please do not repeated freeze-thaw cycles.
Reconstitution	It is recommended that sterile water be added to the vial to prepare a stock solution of

 Tel: 1-631-559-9269 1-516-512-3133

 Email: info@creative-biomart.com  Fax: 1-631-938-8127

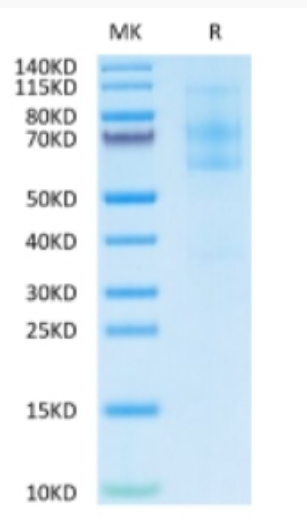
 45-1 Ramsey Road, Shirley, NY 11967, USA

0.2 ug/ul. Centrifuge the vial at 4°C before opening to recover the entire contents.

GENE INFORMATION

Gene Name	Efemp1 epidermal growth factor-containing fibulin-like extracellular matrix protein 1 [Mus musculus]
Official Symbol	Efemp1
Synonyms	EFEMP1; epidermal growth factor-containing fibulin-like extracellular matrix protein 1; EGF-containing fibulin-like extracellular matrix protein 1; FIBL-3; fibulin-3; MGC37612;
Gene ID	216616
mRNA Refseq	NM_146015
Protein Refseq	NP_666127

Tris-Bis PAGE



 Tel: 1-631-559-9269 1-516-512-3133

 Email: info@creative-biomart.com  Fax: 1-631-938-8127

 45-1 Ramsey Road, Shirley, NY 11967, USA