

Recombinant Mouse Efemp1 protein, Flag-Myc-tagged

Cat. No. Efemp1-5008M Lot. No. (See product label)

SPECIFICATION

Product Overview	Recombinant Mouse Efemp1 protein(Q8BPB5)(18-493aa), fused to N-terminal Flag-Myc tag, was expressed in HEK293.
Species	Mouse
Source	HEK293
ProteinLength	18-493aa
Form	If the delivery form is liquid, the default storage buffer is Tris/PBS-based buffer, 5%-50% glycerol. If the delivery form is lyophilized powder, the buffer before lyophilization is Tris/PBS-based buffer, 6% Trehalose, pH 8.0.
Molecular Mass	57.5 kDa
Purity	Greater than 90% as determined by SDS-PAGE.
Storage	Store at -20°C/-80°C upon receipt, aliquoting is necessary for multiple use. Avoid repeated freeze-thaw cycles.
Reconstitution	Please reconstitute protein in deionized sterile water to a concentration of 0.1-1.0 mg/mL. We recommend to add 5-50% of glycerol (final concentration) and aliquot for long-term storage at -20°C/-80°C. Our default final concentration of glycerol is 50%.

 Tel: 1-631-559-9269 1-516-512-3133

 Email: info@creative-biomart.com  Fax: 1-631-938-8127

 45-1 Ramsey Road, Shirley, NY 11967, USA

GENE INFORMATION

Gene Name Efemp1 epidermal growth factor-containing fibulin-like extracellular matrix protein 1 [Mus musculus]

Official Symbol Efemp1

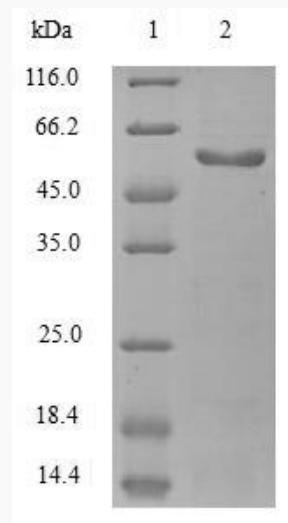
Synonyms EFEMP1; epidermal growth factor-containing fibulin-like extracellular matrix protein 1; EGF-containing fibulin-like extracellular matrix protein 1; FIBL-3; fibulin-3; MGC37612;

Gene ID 216616

mRNA Refseq NM_146015

Protein Refseq NP_666127

SDS-PAGE



 Tel: 1-631-559-9269 1-516-512-3133

 Email: info@creative-biomart.com  Fax: 1-631-938-8127

 45-1 Ramsey Road, Shirley, NY 11967, USA