

Recombinant Mouse Efemp2 Protein, His-tagged

Cat. No. Efemp2-233M Lot. No. (See product label)

SPECIFICATION

Product Overview	Recombinant Mouse Efemp2(Gly182~Val431) fused with His tag at N-terminal was expressed in E. coli.
Species	Mouse
Source	E.coli
ProteinLength	Gly182~Val431
Form	PBS, pH7.4, containing 0.01% SKL, 1mM DTT, 5% Trehalose and Proclin300.
Molecular Mass	29.6kDa
Endotoxin	<1.0EU per 1g (determined by the LAL method)
Purity	> 98%
Applications	Positive Control; Immunogen; SDS-PAGE; WB. If bio-activity of the protein is needed, please check active protein.
Stability	The thermal stability is described by the loss rate. The loss rate was determined by accelerated thermal degradation test, that is, incubate the protein at 37 centigrade for 48h, and no obvious degradation and precipitation were observed. The loss rate is less than 5% within the expiration date under appropriate storage condition.

 Tel: 1-631-559-9269 1-516-512-3133

 Email: info@creative-biomart.com  Fax: 1-631-938-8127

 45-1 Ramsey Road, Shirley, NY 11967, USA

Storage Avoid repeated freeze/thaw cycles. Store at 2-8 centigrade for one month. Aliquot and store at -80 centigrade for 12 months.

Reconstitution Reconstitute in PBS or others.

GENE INFORMATION

Gene Name Efemp2 epidermal growth factor-containing fibulin-like extracellular matrix protein 2 [*Mus musculus*]

Official Symbol Efemp2

Synonyms EFEMP2; epidermal growth factor-containing fibulin-like extracellular matrix protein 2; EGF-containing fibulin-like extracellular matrix protein 2; FIBL-4; fibulin 4; fibulin-4; mutant p53-binding protein 1; EGF-containing fibulin-like extracellular matrix protein 2 (Efemp2); MBP1; Fbln4; 0610011K11Rik;

Gene ID 58859

mRNA Refseq NM_001164352

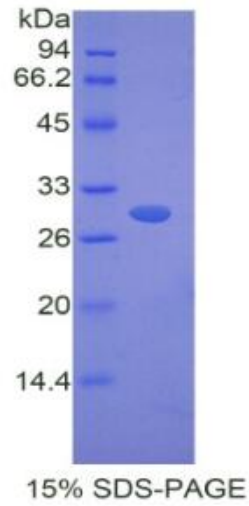
Protein Refseq NP_001157824

UniProt ID Q9WVJ9

 Tel: 1-631-559-9269 1-516-512-3133

 Email: info@creative-biomart.com  Fax: 1-631-938-8127

 45-1 Ramsey Road, Shirley, NY 11967, USA



 Tel: 1-631-559-9269 1-516-512-3133

 Email: info@creative-biomart.com  Fax: 1-631-938-8127

 45-1 Ramsey Road, Shirley, NY 11967, USA