

## Recombinant Mouse Efnb2 Protein, His-tagged

**Cat. No.** Efnb2-1409M    **Lot. No.** (See product label)

### SPECIFICATION

<b>Product Overview</b>	Recombinant Mouse Efnb2 Protein (Ile27-Ala230) with N-His tag was expressed in E. coli.
<b>Species</b>	Mouse
<b>Source</b>	E.coli
<b>ProteinLength</b>	Ile27-Ala230
<b>Description</b>	Enables signaling receptor binding activity. Involved in several processes, including adherens junction organization; positive regulation of cardiac muscle cell differentiation; and regulation of postsynaptic neurotransmitter receptor internalization. Acts upstream of or within several processes, including negative regulation of keratinocyte proliferation; positive regulation of aorta morphogenesis; and vasculature development. Located in Schaffer collateral - CA1 synapse; glutamatergic synapse; and plasma membrane. Is integral component of postsynaptic density membrane. Is expressed in several structures, including alimentary system; brain; cardiovascular system; sensory organ; and urinary system. Orthologous to human EFNB2 (ephrin B2).
<b>Form</b>	Freeze-dried powder
<b>Molecular Mass</b>	Predicted Molecular Mass: 25.9 kDa Accurate Molecular Mass: 29 kDa

 Tel: 1-631-559-9269    1-516-512-3133

 Email: [info@creative-biomart.com](mailto:info@creative-biomart.com)     Fax: 1-631-938-8127

 45-1 Ramsey Road, Shirley, NY 11967, USA

<b>Purity</b>	> 90%
<b>Applications</b>	Positive Control; Immunogen; SDS-PAGE; WB.
<b>Stability</b>	The thermal stability is described by the loss rate. The loss rate was determined by accelerated thermal degradation test, that is, incubate the protein at 37 centigrade for 48h, and no obvious degradation and precipitation were observed. The loss rate is less than 5% within the expiration date under appropriate storage condition.
<b>Storage</b>	Avoid repeated freeze/thaw cycles. Store at 2-8 centigrade for one month. Aliquot and store at -80 centigrade for 12 months.
<b>Storage Buffer</b>	20mM Tris, 150mM NaCl, pH8.0, containing 1mM EDTA, 1mM DTT, 0.01% SKL, 5% Trehalose and Proclin300.
<b>Reconstitution</b>	Reconstitute in 20mM Tris, 150mM NaCl (pH8.0) to a concentration of 0.1-1.0 mg/mL. Do not vortex.

## GENE INFORMATION

<b>Gene Name</b>	Efnb2 ephrin B2 [ <i>Mus musculus</i> (house mouse) ]
<b>Official Symbol</b>	Efnb2
<b>Synonyms</b>	EFNB2; ephrin B2; ephrin-B2; Htk ligand; EPH-related receptor tyrosine kinase ligand 5; Epl5; ELF-2; Eplg5; Htk-L; Lerk5; LERK-5; NLERK-1;
<b>Gene ID</b>	13642
<b>mRNA Refseq</b>	NM_010111

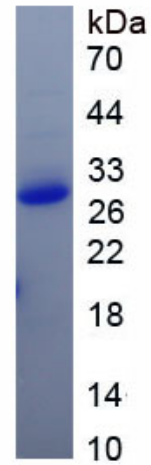
 Tel: 1-631-559-9269 1-516-512-3133

 Email: [info@creative-biomart.com](mailto:info@creative-biomart.com)  Fax: 1-631-938-8127

 45-1 Ramsey Road, Shirley, NY 11967, USA

Protein Refseq NP\_034241

UniProt ID P52800



Tel: 1-631-559-9269 1-516-512-3133

Email: [info@creative-biomart.com](mailto:info@creative-biomart.com) Fax: 1-631-938-8127

45-1 Ramsey Road, Shirley, NY 11967, USA