

## Recombinant Mouse Egf Protein, His-tagged

**Cat. No.** Egf-7197M    **Lot. No.** (See product label)

### SPECIFICATION

<b>Product Overview</b>	Recombinant mouse EGF protein, fused to His-tag at N-terminus, was expressed in E. coli and purified by conventional column chromatography, after refolding of the isolated inclusion bodies in a renaturation buffer.
<b>Species</b>	Mouse
<b>Source</b>	E.coli
<b>ProteinLength</b>	977-1029
<b>Description</b>	This gene encodes epidermal growth factor (EGF), the founding member of the EGF family of growth factors that are implicated in cell proliferation and differentiation. The encoded protein can localize to the membrane and function in juxtacrine signaling or undergo proteolytic processing to generate a soluble form of the hormone. Mice lacking the encoded protein do not exhibit an abnormal phenotype but transgenic mice overexpressing the encoded protein exhibit hypospermatogenesis.
<b>Form</b>	Liquid
<b>Molecular Mass</b>	8.6 kDa (77aa)
<b>AA Sequence</b>	MGSSHHHHHSSGLVPRGSHMGSMNSYPGCPSSYDGYCLNGGVCMHIESLDSYT CNCVIGYSGDRCQTRDLRWWELR
<b>Purity</b>	> 90 % by SDS-PAGE

 Tel: 1-631-559-9269    1-516-512-3133

 Email: [info@creative-biomart.com](mailto:info@creative-biomart.com)     Fax: 1-631-938-8127

 45-1 Ramsey Road, Shirley, NY 11967, USA

<b>Stability</b>	Shelf life: one year from despatch.
<b>Storage</b>	Store undiluted at 2-8 centigrade for one week or (in aliquots) at -20 to -80 centigrade for longer. Avoid repeated freezing and thawing.
<b>Concentration</b>	0.5 mg/mL (determined by Bradford assay)
<b>Storage Buffer</b>	20 mM Tris-HCl buffer (pH 8.0) containing 2 mM DTT, 10 % glycerol, 100 mM NaCl

## GENE INFORMATION

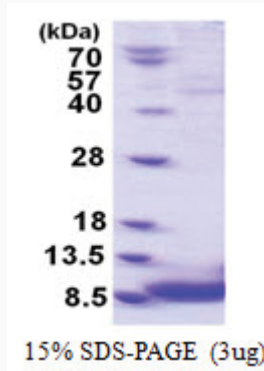
<b>Gene Name</b>	Egf epidermal growth factor [ <i>Mus musculus</i> (house mouse) ]
<b>Official Symbol</b>	Egf
<b>Synonyms</b>	Egf; epidermal growth factor; A1790464; pro-epidermal growth factor; Pro-epidermal growth factor precursor (EGF)
<b>Gene ID</b>	13645
<b>mRNA Refseq</b>	NM_001310737
<b>Protein Refseq</b>	NP_001297666
<b>UniProt ID</b>	Q3UWD7

 Tel: 1-631-559-9269 1-516-512-3133

 Email: [info@creative-biomart.com](mailto:info@creative-biomart.com)  Fax: 1-631-938-8127

 45-1 Ramsey Road, Shirley, NY 11967, USA

SDS-PAGE



 Tel: 1-631-559-9269 1-516-512-3133

 Email: [info@creative-biomart.com](mailto:info@creative-biomart.com)  Fax: 1-631-938-8127

 45-1 Ramsey Road, Shirley, NY 11967, USA